

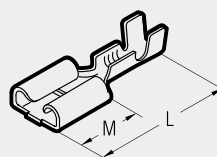
# RN-FA BN-FA



- Manufactured from brass strip
- Recommended crimping tools are shown on pages 88 and 89

## FEMALE CONNECTORS

*open barrel*



Conductor Size sqmm (AWG)	Ref.	Tab mm	M mm	L mm	Quantity Box/Bag
0,5÷1 (20÷17)	RN-FA 305	2,8 x 0,5	6,3	15,0	6.000/100
	RN-FA 405	4,8 x 0,5	6,3	15,0	5.000/100
	RN-FA 608	6,3 x 0,8	7,7	19,0	3.000/100
1÷2,5 (17÷14)	BN-FA 608	6,3 x 0,8	7,7	19,0	3.000/100
1÷2,5 (17÷14)	* BN-FAB 608	6,3 x 0,8	7,7	15,5	1.000/100
1÷2,5 (17÷14)	** BN-FAR 608	6,3 x 0,8	7,7	19,0	3.000/100

\*flag type \*\*with retainer

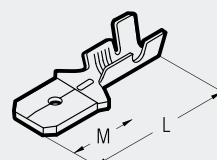
# RN-MA BN-MA



- Manufactured from brass strip
- Recommended crimping tool is shown on page 89

## MALE CONNECTORS

*open barrel*



Conductor Size sqmm (AWG)	Ref.	Tab mm	M mm	L mm	Quantity Box/Bag
0,5÷1 (20÷17)	RN-MA 305	2,8 x 0,5	5,8	13,0	6.000/100
	RN-MA 405	4,8 x 0,5	6,3	17,3	5.000/100
	RN-MA 608	6,3 x 0,8	7,9	19,7	4.000/100
1÷2,5 (17÷14)	BN-MA 608	6,3 x 0,8	7,9	20,0	4.000/100

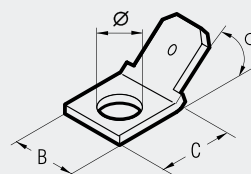
## MALE TABS

*for board mounting*

# MP MPD



- Manufactured from brass strip



Ref.	Tab mm	Ø Stud mm	B mm	C mm	α	Quantity Box/Bag
MP 608	6,3 x 0,8	4	8	8,5	0°	5.000/100
MP 608/45	6,3 x 0,8	4	8	8,5	45°	6.000/100
MP 608/90	6,3 x 0,8	4	8	8,5	90°	5.000/100
* MP 608D	6,3 x 0,8	4	8	14	0°	5.000/100

\*double tab