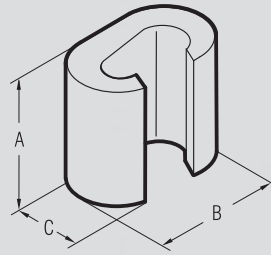


SLEEVE CONNECTORS

Tin plated version



C

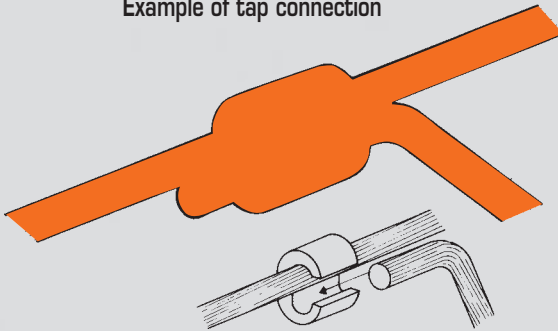


"C" connectors are manufactured from high purity copper profiles and are suitable for a variety of uses either to create an earthing network or tapping off from overhead distribution lines. Each connector is marked as follows:

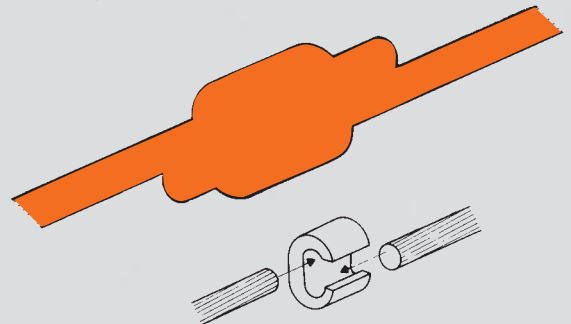
- Cembre trade mark
- Reference number
- Conductor size-Run
- Conductor size-Tap
- Number of crimps
- Die reference.

Conductor Size sqmm		Ref.	Dimensions mm			Quantity Box/Bag	Mechanical Tools	Hydraulic Tools	
Run	Tap		A	B	C				
6÷2,5	6÷1,5	C 6-C 6 ST	9,0	9,8	6,4	100	HP4-C10	HT 45-E	RH 50 B 51
10	10÷1,5	C 10-C 10 ST	12,0	12,6	8,4	100			
16	16÷1,5	C 16-C 16 ST	17,0	19,4	12,0	100	HT 45-E	RH 50 B 51	RHU 81
25÷16	10÷1,5	C 25-C 10 ST	17,0	19,8	13,0	50			
25	25÷16	C 25-C 25 ST	17,0	21,4	13,0	50	HT 45-E	RH 50 B 51	RHU 81
40÷35	16÷1,5	C 35-C 16 ST	21,0	24,6	15,4	25			
40÷35	40÷25	C 35-C 35 ST	21,0	26,6	15,6	25	HT 45-E	RH 50 B 51	RHU 81
50	25÷10								
50	25÷4	C 50-C 25 ST	25,0	32,9	21,0	25	HT 45-E	RH 50 B 51	RHU 81
50	50÷35	C 50-C 50 ST	26,0	33,0	21,0	25			
70÷63	25÷1,5	C 70-C 25 N ST	21,0	26,4	17,5	25	HT 45-E	RH 50 B 51	RHU 81
70÷50	40÷4	C 70-C 35 ST	28,0	33,0	21,0	25			
70÷50	70÷35	C 70-C 70 ST	28,0	34,0	21,0	25	HT 45-E	RH 50 B 51	RHU 81
100÷95	40÷4	C 95-C 35 ST	29,0	40,6	26,0	25			
100÷95	70÷40	C 95-C 70 ST	29,0	41,0	26,0	25	HT 45-E	RH 50 B 51	RHU 81
100÷95	100÷63	C 95-C 95 ST	29,0	41,0	26,0	25			
125÷110	125÷25	C 120-C 120 ST	30,0	45,0	28,0	25	HT 45-E	RH 50 B 51	RHU 81
160÷150	125÷25	C 150-C 120 ST	31,0	45,0	28,0	25			
150	150÷63	C 150-C 150 ST	30,0	45,0	28,0	25	HT 45-E	RH 50 B 51	RHU 81
185	100÷16	C 185-C 95 ST	31,0	45,0	28,0	25			
185÷120	185÷120	C 185-C 185 ST	22,6	68,0	34,0	15	HT 45-E	RH 50 B 51	RHU 81
240÷150	120÷95	C 240-C 120 ST	22,6	68,0	34,0	15			

Example of tap connection

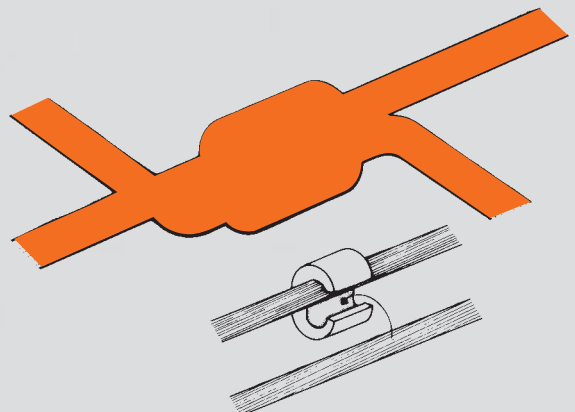


Example of joint connection



Example of joining two running conductors

Conductor Size sqmm	Ref.
25-25	C 35-C 16 ST
35-35	C 35-C 35 ST
50-50	C 70-C 70 ST
63-63	C 95-C 70 ST
70-70	
95-95	C 150-C 120 ST
120-120	
125-125	C 150-C 150
120-120	C 185-C 95 ST
125-125	

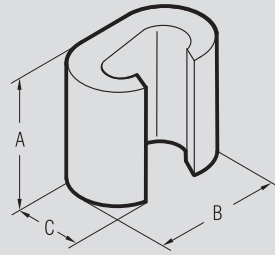




SLEEVE CONNECTORS

Bright surface version

C



Conductor Size sqmm		Ref.	Dimensions mm			Quantity Box/Bag	Mechanical Tools	Hydraulic Tools				
Run	Tap		A	B	C							
6÷2,5	6÷1,5	C 6-C 6	9,0	9,8	6,4	100	HP4-C10	HT 45-E	RH 50 B 51	RHU 81	HT 120 and tools and heads with 130 kN crimping force	ECWH3D
10	10÷1,5	C 10-C 10	12,0	12,6	8,4	100						
16	16÷1,5	C 16-C 16	17,0	19,4	12,0	100						
25÷16	10÷1,5	C 25-C 10	17,0	19,8	13,0	50						
25	25÷16	C 25-C 25	17,0	21,4	13,0	50						
40÷35	16÷1,5	C 35-C 16	21,0	24,6	15,4	25						
40÷35	40÷25	C 35-C 35	21,0	26,6	15,6	25						
50	25÷10											
50	25÷4	C 50-C 25	25,0	32,9	21,0	25						
50	50÷35	C 50-C 50	26,0	33,0	21,0	25						
70÷63	25÷1,5	C 70-C 25 N	21,0	26,4	17,5	25						
70÷50	40÷4	C 70-C 35	28,0	33,0	21,0	25						
70÷50	70÷35	C 70-C 70	28,0	34,0	21,0	25						
100÷95	40÷4	C 95-C 35	29,0	40,6	26,0	25						
100÷95	70÷40	C 95-C 70	29,0	41,0	26,0	25						
100÷95	100÷63	C 95-C 95	29,0	41,0	26,0	25						
125÷110	125÷25	C 120-C 120	30,0	45,0	28,0	25						
160÷150	125÷25	C 150-C 120	31,0	45,0	28,0	25						
150	150÷63	C 150-C 150	30,0	45,0	28,0	25						
185	100÷16	C 185-C 95	31,0	45,0	28,0	25						
185÷120	185÷120	C 185-C 185	22,6	68,0	34,0	15						
240÷150	120÷95	C 240-C 120	22,6	68,0	34,0	15						

Featuring same characteristics of tin plated version, (see opposite page).