

**HelaGuard
SC Galvanised Steel Conduit**

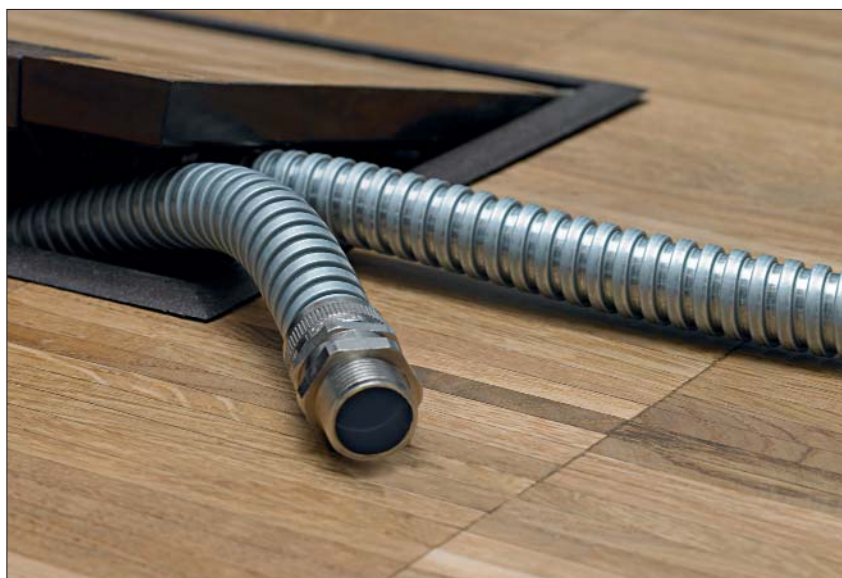
General purpose flexible steel conduit.

Features and Benefits

- High compression strength
- High tensile strength
- High impact strength
- Highly flexible

Application

Underfloor wiring in offices data cabling, protection of hydraulic or pneumatic conduits. For high mechanical protection.



HelaGuard SC Galvanised Steel Conduit.

Material Data	
Material	Galvanised Steel (GS)
Operating Temperature	-50 °C to +300 °C



Technical Table

Article-No.	Type	Nominal Ø	Outside Ø (OD)	Ø D	Bending Radius	Weight (g/m)	Reel Length (m)	Colour
166-30100	SC10	10	9.0	6.8	25	110	50	Metal (ML)
166-30101	SC12	12	13.0	10.2	30	113	50	Metal (ML)
166-30102	SC16	16	16.0	13.0	40	152	25	Metal (ML)
166-30103	SC20	20	20.5	16.9	45	295	25	Metal (ML)
166-30104	SC25	25	25.0	21.1	55	321	25	Metal (ML)
166-30105	SC32	32	32.0	28.1	70	450	25	Metal (ML)
166-30106	SC40	40	42.5	37.6	80	519	25	Metal (ML)
166-30107	SC50	50	53.0	48.4	90	802	25	Metal (ML)
166-30108	SC63	63	62.5	57.5	115	836	10	Metal (ML)
166-30109	SC75	75	77.0	70.0	150	1137	10	Metal (ML)

All dimensions in mm. Subject to technical changes.

Other reel length available on request.

HelaGuard

SSC Stainless Steel Conduit

Stainless steel corrosion resistant flexible conduit.

Features and Benefits

- High compression strength
- High tensile strength
- High impact strength
- Highly flexible
- Highly rust and corrosion resistant

Application

Protection of sensor cables, instrumentation tubing, hydraulic and pneumatic conduits, particularly in corrosive environments. Commonly used in hospitals and clinics.



The HelaGuard SSC stainless steel conduit offers superior mechanical protection in corrosive environments.

Material Data

Material	Stainless Steel (SS316)
Operating Temperature	-50 °C to +300 °C



Technical Table

Article-No.	Type	Nominal Ø	Outside Ø (OD)	Ø D	Bending Radius	Weight (g/m)	Reel Length (m)	Colour
166-30200	SSC10	10	9.0	6.8	25	110	25	Metal (ML)
166-30201	SSC12	12	13.0	10.2	30	126	25	Metal (ML)
166-30202	SSC16	16	16.0	13.0	40	162	25	Metal (ML)
166-30203	SSC20	20	20.5	16.9	45	202	25	Metal (ML)
166-30204	SSC25	25	25.0	21.1	55	300	25	Metal (ML)
166-30205	SSC32	32	32.0	28.1	70	230	25	Metal (ML)
166-30206	SSC40	40	42.5	37.6	80	410	10	Metal (ML)
166-30207	SSC50	50	53.0	48.4	90	516	10	Metal (ML)

All dimensions in mm. Subject to technical changes.

Other reel length available on request.

**HelaGuard
SC-FM Fixed External Thread, IP40**

Fixed external thread, nickel plated brass.

Features and Benefits

- Two part fitting comprising shell and body with external thread
- Can be secured with a locknut



HelaGuard SC-FM Fixed External Thread.

Technical Table

Article-No.	Type	Conduit Ø	Thread Size (metric)	Thread Size (PG)	Pack Cont.
166-30300	SC10-FM-M12	10	M12	–	10
166-30311	SC10-FM-PG7	10	–	PG7	10
166-30301	SC12-FM-M16	12	M16	–	10
166-30312	SC12-FM-PG7	12	–	PG7	10
166-30313	SC12-FM-PG9	12	–	PG9	10
166-30302	SC16-FM-M16	16	M16	–	10
166-30303	SC16-FM-M20	16	M20	–	10
166-30314	SC16-FM-PG11	16	–	PG11	10
166-30304	SC20-FM-M20	20	M20	–	10
166-30315	SC20-FM-PG16	20	–	PG16	10
166-30305	SC25-FM-M25	25	M25	–	10
166-30316	SC25-FM-PG21	25	–	PG21	10
166-30306	SC32-FM-M32	32	M32	–	2
166-30317	SC32-FM-PG29	32	–	PG29	2
166-30307	SC40-FM-M40	40	M40	–	2
166-30318	SC40-FM-PG36	40	–	PG36	2
166-30308	SC50-FM-M50	50	M50	–	1
166-30319	SC50-FM-PG42	50	–	PG42	1
166-30320	SC50-FM-PG48	50	–	PG48	1
166-30309	SC63-FM-M63	63	M63	–	1
166-30310	SC75-FM-M75	75	M75	–	1

All dimensions in mm. Subject to technical changes.

Material Data

Material	Nickel Plated Brass (NPB)
Colour	Metal (ML)
Operating Temperature	-100 °C to +300 °C



**HelaGuard
SSC-FM Fixed External Thread, IP40**

Fixed external thread, stainless steel (SS316).

Features and Benefits

- Two part fitting comprising shell and body with external thread
- Can be secured with a locknut



HelaGuard SSC-FM Fixed External Thread.

Technical Table

Article-No.	Type	Conduit Ø	Thread Size (metric)	Pack Cont.
166-30321	SSC10-FM-M12	10	M12	10
166-30322	SSC12-FM-M16	12	M16	10
166-30323	SSC16-FM-M16	16	M16	10
166-30324	SSC20-FM-M20	20	M20	10
166-30325	SSC25-FM-M25	25	M25	10
166-30326	SSC32-FM-M32	32	M32	2
166-30327	SSC40-FM-M40	40	M40	2
166-30328	SSC50-FM-M50	50	M50	1

All dimensions in mm. Subject to technical changes.

Material Data

Material	Stainless Steel (SS316)
Colour	Metal (ML)
Operating Temperature	-100 °C to +400 °C



**HelaGuard
SC-SM Swivel External Thread,
IP40**

Swivel external thread, nickel plated brass.

Features and Benefits

- Two part fitting comprising shell and body
- External thread swivels about main body
- Can be secured with a locknut



HelaGuard SC-SM Swivel External Thread.

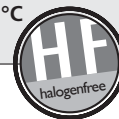
Technical Table

Article-No.	Type	Conduit Ø	Thread Size (metric)	Thread Size (PG)	Pack Cont.
166-30400	SC10-SM-M12	10	M12	–	10
166-30410	SC10-SM-PG7	10	–	PG7	10
166-30401	SC12-SM-M16	12	M16	–	10
166-30411	SC12-SM-PG9	12	–	PG9	10
166-30402	SC16-SM-M16	16	M16	–	10
166-30403	SC16-SM-M20	16	M20	–	10
166-30412	SC16-SM-PG11	16	–	PG11	10
166-30404	SC20-SM-M20	20	M20	–	10
166-30413	SC20-SM-PG13	20	–	PG13.5	10
166-30414	SC20-SM-PG16	20	–	PG16	10
166-30405	SC25-SM-M25	25	M25	–	10
166-30415	SC25-SM-PG21	25	–	PG21	10
166-30406	SC32-SM-M32	32	M32	–	2
166-30416	SC32-SM-PG29	32	–	PG29	2
166-30407	SC40-SM-M40	40	M40	–	2
166-30417	SC40-SM-PG36	40	–	PG36	2
166-30408	SC50-SM-M50	50	M50	–	1
166-30418	SC50-SM-PG42	50	–	PG42	1
166-30409	SC63-SM-M63	63	M63	–	1

All dimensions in mm. Subject to technical changes.

Material Data

Material	Nickel Plated Brass (NPB)
Colour	Metal (ML)
Operating Temperature	-100 °C to +300 °C



**HelaGuard
SSC-SM Swivel External Thread,
IP40**

Swivel external thread, stainless steel (SS316).

Features and Benefits

- Two part fitting comprising shell and body
- External thread swivels about main body
- Can be secured with a locknut



HelaGuard SSC-SM Swivel External Thread.

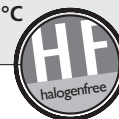
Technical Table

Article-No.	Type	Conduit Ø	Thread Size (metric)	Pack Cont.
166-30419	SSC10-SM-M12	10	M12	10
166-30420	SSC12-SM-M16	12	M16	10
166-30421	SSC16-SM-M16	16	M16	10
166-30422	SSC20-SM-M20	20	M20	10
166-30423	SSC25-SM-M25	25	M25	10
166-30424	SSC32-SM-M32	32	M32	2

All dimensions in mm. Subject to technical changes.

Material Data

Material	Stainless Steel (SS316)
Colour	Metal (ML)
Operating Temperature	-100 °C to +400 °C



**HelaGuard
SC-PC Plain Hole Connector, IP40**

Plain hole connector, nickel plated brass.

Features and Benefits

- Two part fitting comprising shell and body without thread
- Body is fitted to the conduit through the opposite side of the entry
- Acts as a locking device
- Provides a smooth entry bush



HelaGuard SC-PC Plain Hole Connector.

Technical Table

Article-No.	Type	Conduit Ø	Pack Cont.
166-30500	SC10-PC	10	10
166-30501	SC12-PC	12	10
166-30502	SC16-PC	16	10
166-30503	SC20-PC	20	10
166-30504	SC25-PC	25	10
166-30505	SC32-PC	32	2
166-30506	SC40-PC	40	2
166-30507	SC50-PC	50	1
166-30508	SC63-PC	63	1
166-30509	SC75-PC	75	1

All dimensions in mm. Subject to technical changes.

Material Data

Material	Nickel Plated Brass (NPB)
Colour	Metal (ML)
Operating Temperature	-100 °C to +300 °C



**HelaGuard
SC-FF Fixed Internal Thread, IP40**

Fixed internal thread, nickel plated brass.

Features and Benefits

- Two part fitting comprising shell and body with internal thread
- Can be used to couple two pieces of conduit together when used with a swivel fitting



HelaGuard SC-FF Fixed Internal Thread.

Technical Table

Article-No.	Type	Conduit Ø	Thread Size (metric)	Pack Cont.
166-30600	SC16-FF-M20	16	M20	10
166-30601	SC20-FF-M20	20	M20	10
166-30602	SC25-FF-M25	25	M25	10
166-30603	SC32-FF-M32	32	M32	2

All dimensions in mm. Subject to technical changes.