

Crimping dies

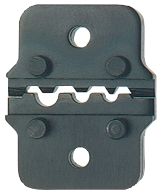
Series 50



K 50

EK 15/50

EK 15/50 G



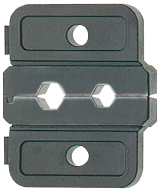
■ **Crimping dies R 50**



Suitable for:

- Copper tubular cable lugs and connectors, standard design

mm ²	Part No.		
0.75-2.5	R501		
4-10	R502		



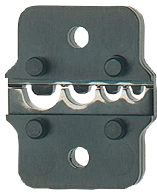
■ **Crimping dies M 50**



Suitable for:

- Copper tubular cable lugs and compression joints for solid conductors

mm ²	Part No.		
1.5-4	M50154		
6-10	M50610		



■ **Crimping dies Q 50**



Suitable for:

- Copper solderless terminals (DIN 46234) and pin terminals (DIN 46230) acc. to DIN - Cu
- Copper solderless connectors (DIN 46341) acc. to DIN

mm ²	Part No.		
0.5-10	Q501		



■ **Crimping dies AE 50**



Suitable for:

- Cable end sleeves

mm ²	Part No.		
0.14-6	AE501		
10-25	AE502		
35-50	AE503		



■ **Crimping dies IS 50**



Suitable for:

- Insulated cable connections, double crimping

mm ²	for part	Part No.	
0.5-6		IS501	
0.1-1	8201-8,201B	IS503	

■ Crimping dies IS 50

Suitable for:

- Insulated cable connections, single crimping

mm ²	for part	Part No.	
10-16		IS502	
0.5-2.5	670 WS 680 WS	IS504	
4-6	700 WS	IS505	

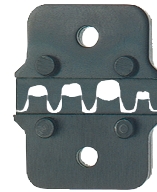


■ Crimping dies CR 50

Suitable for:

- Non-insulated receptacles

mm ²	for part	Part No.	Tab width mm
0,25-6		CR501	2,8 / 6,3
0,5-2,5		CR502	4,8
0.5-1	38201, 38,201A	CR503	2.8
0.5-2.5	3720, 3735	CR504	6.3
0.5-1.5	3725	CR505	6.3

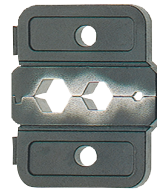


■ Crimping dies BNC 50

Suitable for:

- For stud and shielded sleeves
- BNC plugs for coax cable RG 58, 59, 62 and 71

Part No.			
BNC501			



■ Crimping dies SB 50

Suitable for:

- Turned pin receptacles
- Pin connectors

mm ²	Part No.		
0.1-1 1.5-2.5 4	SB501		

