



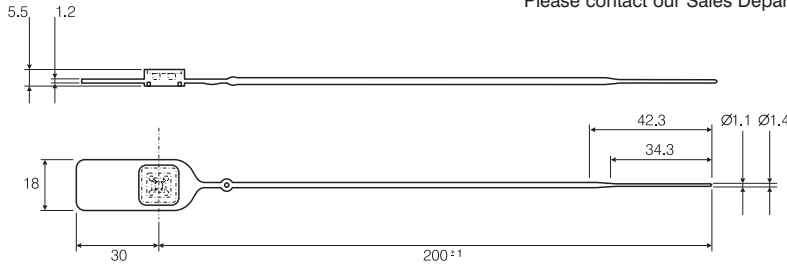
Mini Jaw-Lock Security Seals

PART NUMBER	Colour	Strap Length	Strap Diameter	Unit Quantity
765 1001	Red	200.0	2.0	1,000
765 1002	Blue	200.0	2.0	1,000
765 1003	Yellow	200.0	2.0	1,000

Material: Seal Body - Polypropylene
Metal Jaw - Stainless Steel

Specifications:

- Average break strength of 15kgf (147N)
- Supplied in mats of 5 pieces
- Suitable for temperatures ranging from -20°C to 80°C
- Supplied with sequential serial numbers
- Approved by US Customs and Border Protections
- Ideal for securing airline trolleys during transit
- Ideal for sealing ATM cassettes
- Provides a deterrent against and indication of tampering, pilferage and unauthorised entry
- Small strap diameter is suitable for applications with small sealing apertures
- Smooth strap is more user-friendly than conventional strap designs
- The stainless steel locking mechanism gives a high level of security once applied
- Simple twist action breakage requires no tooling for removal
- Available in other colours, strap lengths and longer tag sizes - ideal for barcoding. Please contact our Sales Department for further information



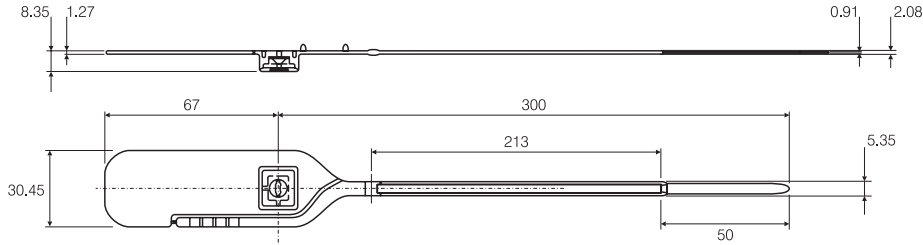
Smooth-Lock Security Seals

PART NUMBER	Colour	Strap Length	Strap Thickness	Strap Width	Unit Quantity
766 1001	Red	300.0	2.0	5.4	1,000
766 1002	Blue	300.0	2.0	5.4	1,000

Material: Seal Body - Polypropylene
Metal Jaw - Stainless Steel

Specifications:

- Average break strength of 25kgf (245N)
- Supplied in mats of 5 pieces
- Suitable for temperatures ranging from -20°C to 80°C
- Supplied with sequential serial numbers
- Provides a deterrent against and indication of tampering, pilferage and unauthorised entry
- Smooth strap is more user-friendly than conventional strap designs
- The stainless steel locking mechanism gives a high level of security once applied
- Side tear-off tag requires no tooling for removal
- Moulded in high quality food grade Polypropylene
- Available in other colours and strap lengths. Please contact our Sales Department for further information



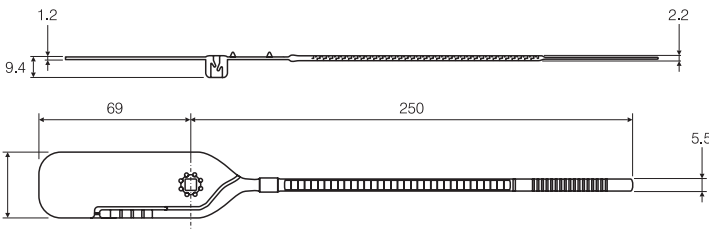
Rib-Lock Security Seals

PART NUMBER	Colour	Strap Length	Strap Thickness	Strap Width	Unit Quantity
764 1001	Red	250.0	2.2	5.5	1,000
764 1002	Blue	250.0	2.2	5.5	1,000
764 1003	Yellow	250.0	2.2	5.5	1,000

Material: Polypropylene

Specifications:

- Average break strength of 19kgf (186N)
- Supplied in mats of 5 pieces
- Suitable for temperatures ranging from -20°C to 80°C
- Supplied with sequential serial numbers
- Approved by US Customs and Border Protections
- Provides a deterrent against and indication of tampering, pilferage and unauthorised entry
- Protective sides along the teeth make the seal more user-friendly than similarly designed seals
- Teeth on both sides of the strap prevent incorrect insertion
- Side tear-off tag requires no tooling for removal
- Moulded in high quality food grade Polypropylene
- Available in other colours and strap lengths. Please contact our Sales Department for further information





Twin-Lock Security Seals

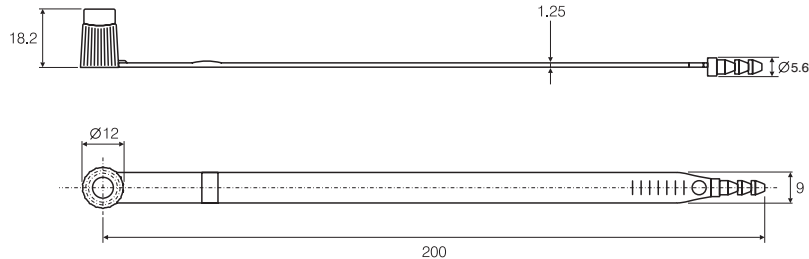
PART NUMBER	Colour	Locking Diameter	Strap Length	Strap Thickness	Strap Width	Unit Quantity
762 1001	Red	60.0	200.0	1.25	9.0	1,000
762 1002	Blue	60.0	200.0	1.25	9.0	1,000

Material: Seal Body - Polypropylene
Locking Jaw - Acetal

Specifications:

- Average break strength of 15kgf (147N)
- Supplied in mats of 10 pieces
- Suitable for temperatures ranging from -20°C to 80°C
- Supplied with sequential serial numbers

- Ideal for securing vehicle doors during transit
- Patented double-locking mechanism enhances the level of security
- The special acetal locking jaws improve the security even further
- No tooling required for removal
- Moulded in high quality food grade Polypropylene
- Available in other colours. Please contact our Sales Department for further information



Plaseal® Flag Security Seals

PART NUMBER					A	B	C	D	L	Logo Area	Clamping Range		Unit Quantity
Red	Blue	Green	Yellow	White							Max.	Min.	
752 1001	752 3001	752 4001	752 5001	752 9001	50.0	20.0	46.0	148.0	222.0	15 x 30	55.0	15.0	1,000
752 1101	752 3101	752 4101	752 5101	752 9101	50.0	20.0	142.0	52.0	222.0	15 x 30	55.0	45.0	1,000
752 1201	752 3201	752 4201	752 5201	752 9201	50.0	20.0	46.0	229.0	303.0	15 x 30	80.0	15.0	1,000
752 1301	752 3301	752 4301	752 5301	752 9301	50.0	20.0	142.0	133.0	303.0	15 x 30	80.0	45.0	1,000
752 1401	752 3401	752 4401	752 5401	752 9401	50.0	20.0	142.0	212.0	382.0	15 x 30	105.0	45.0	1,000

Material: Nylon 6
Tensile Strength: 35.7kgf (350N)

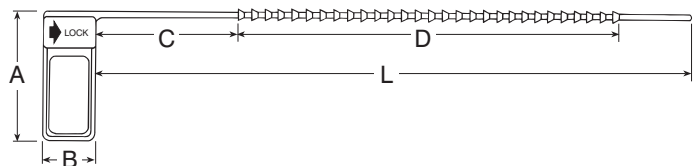
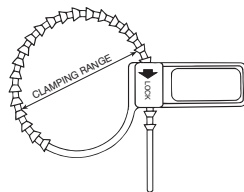
Tests conducted with seals assembled.
Test results are typical and do not form part of the specification.

- Provides a deterrent against and indication of tampering, pilferage and unauthorised entry
- Lightweight but tough
- Will not corrode
- Ideal for securing vehicle doors during transit

Flag seals feature this wording on one side only with the other side plain



When ordering please state if you require hot stamped logos or serial numbers



Steel-Lock Security Seal

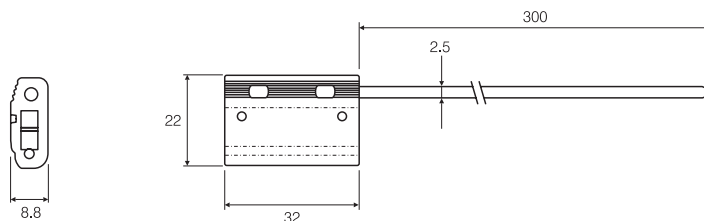
PART NUMBER	Colour	Length of Casing	Width of Casing	Cable Length	Cable Diameter	Unit Quantity
767 1001	Blue - Anodised	32.0	22.0	300.0	2.5	250

Materials: Cable - Galvanised Steel
Body - Aluminium Alloy

Specifications:

- Average break strength of 450kgf (4413N)
- Suitable for temperatures ranging from -40°C to 120°C
- Supplied with sequential serial numbers
- Accepted by UK Customs, US Customs and Border Protections

- Cable splays upon cutting thereby preventing rejoining
- Ideal for utilities, meters and valves
- Unique locking mechanism for minimal reversal at engagement
- Can be supplied with printed barcode





Freight-Lock Security Seal

PART NUMBER	Colour	Locking Distance	Locking Diameter	Barrel Diameter	Pin Diameter	Unit Quantity
768 1002	Blue	48.0 (max)	9.0 - 19.0	24.8	8.5	200

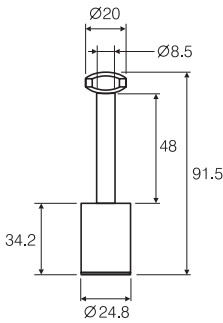
Materials:

Barrel - Styrene Acrylonitrile (SAN)
Internal Barrel components - Steel
Pin - Steel overmoulded with SAN

Specifications:

- Pull-out load 1,000kgf (9,806N) minimum
- Suitable for temperatures ranging from -40°C to 110°C
- Supplied with sequential serial numbers
- Conforms to the requirements of Class I of UK Customs, US Customs and Border Protections

- Total seal number encapsulated with non-rotatable pin insertion
- Matching seal number on pin and barrel for tighter security control
- The entire plastic enclosure for the barrel and pin is made of hard durable SAN plastic to reveal evidence of any attempts at tampering
- Ideal for shipping containers, trucks and rail freight



Paddle Seals



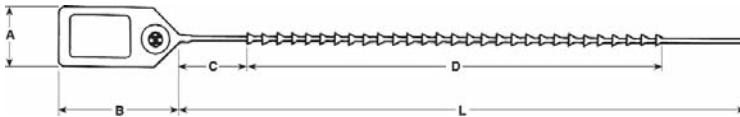
PART NUMBER					A	B	C	D	L	Clamping Range		Unit Quantity
Red	Blue	Green	Yellow	White						Max.	Min.	
754 1000	754 3000	754 4000	754 5000	754 9000	15.0	30.0	15.0	120.0	150.0	40.0	7.0	1,000
754 1100	754 3100	754 4100	754 5100	754 9100	15.0	30.0	15.0	195.0	225.0	60.0	7.0	1,000
754 1200	754 3200	754 4200	754 5200	754 9200	15.0	30.0	15.0	270.0	300.0	85.0	7.0	1,000

Material: Polypropylene
Tensile Strength 6.62kgf (65N)

Tests conducted with seals assembled.
Test results are typical and do not form part of the specification.

Logo Area: 15 x 9

- Provides a deterrent against, and indication of tampering, pilferage and unauthorised entry
- Lightweight but tough
- Will not corrode
- Easy to assemble with fingertip pressure
- Available in a variety of colours



Paddle seals are plain on both sides

When ordering please state if you require logos or serial numbers hot-stamping

Plaseal® Padlock Security Seals



PART NUMBER							A	B	C	D	Logo Area	Tensile Strength N	Form	Unit Quantity
Red	Grey	Blue	Green	Yellow	Natural	Black								
750 1101	750 2101	750 3101	750 4101	750 5101	750 7101	750 8101	24.5	51.0	66.4	19.4	15.3 x 9.3	190	B	1,000
750 1201	750 2201	750 3201	750 4201	750 5201	750 7201	750 8201	38.4	33.6	50.9	30.0	28.0 x 11.0	160	C	1,000

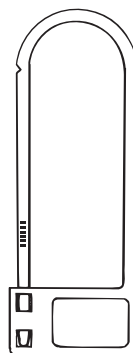
Material: Acetal



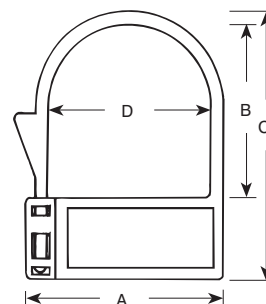
Padlock seals feature this wording on one side only with the other side plain

Form C has locking aid on loop

- Provides a deterrent against, and indication of tampering, pilferage and unauthorised entry
- Lightweight but tough
- Will not corrode
- Easy to assemble with fingertip pressure
- Available in a variety of colours



Form B



Form C