

Circuit Board Spacers SPLSN Series

PART NUMBER		Dimensions						Unit Quantity
		A	B	Mounting Holes ϕ		Applicable Thickness		
UL94V-2	UL94V-0			PCB	Chassis	PCB	Chassis	
055 0000	055 0012	4.9	7.1	4	4.8	0.8~1.6	0.5~2.0	500
055 0001	055 0013	6.2	8.4	4	4.8	0.8~1.6	0.5~2.0	500
055 0002	055 0014	9.4	11.6	4	4.8	0.8~1.6	0.5~2.0	500
055 0003	055 0015	11.0	13.2	4	4.8	0.8~1.6	0.5~2.0	500
055 0004	055 0016	12.5	14.7	4	4.8	0.8~1.6	0.5~2.0	500
055 0005	055 0017	15.7	17.9	4	4.8	0.8~1.6	0.5~2.0	500
055 0006	055 0018	18.9	21.1	4	4.8	0.8~1.6	0.5~2.0	500
055 0007	055 0019	22.0	24.2	4	4.8	0.8~1.6	0.5~2.0	500
055 0008	055 0020	25.1	27.3	4	4.8	0.8~1.6	0.5~2.0	500
055 0009	055 0021	28.3	30.5	4	4.8	0.8~1.6	0.5~2.0	500
055 0010	055 0022	31.5	33.7	4	4.8	0.8~1.6	0.5~2.0	500
055 0011	055 0023	34.6	36.8	4	4.8	0.8~1.6	0.5~2.0	500

Material: Nylon 66
RoHS Directive 2002/95/EC compliant

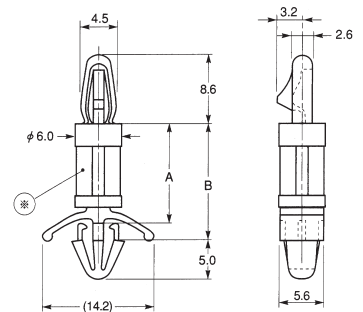
Colours:
UL94V-2: Natural
UL94V-0: White



- Firmly and accurately maintains a constant distance between the chassis and PC board
- Quick and easy to install
- Easy to remove from the PC board



For a range of supports (SPSN Series), please go to:
www.anixtercomponents.com



* The mid-section design of the 055 0000 and 055 0012 are different

Circuit Board Spacers SPD Series

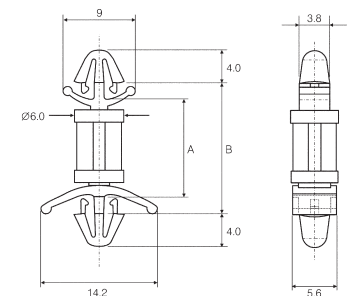
PART NUMBER		Dimensions						Unit Quantity
		A	B	Mounting Holes ϕ		Applicable Thickness		
UL94V-2	UL94V-0			PCB	Chassis	PCB	Chassis	
055 2000	055 2008	4.6	8.9	4.0	4.0	1.6	0.5~2.0	500
055 2001	055 2009	5.9	10.2	4.0	4.0	1.6	0.5~2.0	500
055 2002	055 2010	9.1	13.4	4.0	4.0	1.6	0.5~2.0	500
055 2003	055 2011	10.7	15.0	4.0	4.0	1.6	0.5~2.0	500
055 2004	055 2012	12.2	16.5	4.0	4.0	1.6	0.5~2.0	500
055 2005	055 2013	15.4	19.7	4.0	4.0	1.6	0.5~2.0	500
055 2006	055 2014	18.6	22.9	4.0	4.0	1.6	0.5~2.0	500
055 2007	055 2015	21.7	26.0	4.0	4.0	1.6	0.5~2.0	500

Material: Nylon 66
RoHS Directive 2002/95/EC compliant

Colours:
UL94V-2: Natural
UL94V-0: White



- Fixes the chassis and PC board at a constant distance between each other
- Uses $\phi 4$ mounting holes on both the chassis and PC board



Circuit Board Spacers RSPLS Series



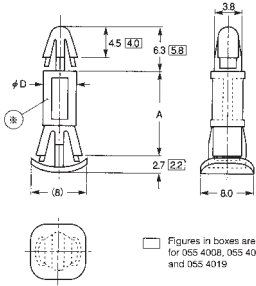
PART NUMBER		Dimensions						Unit Quantity
		A	øD	Mounting Holes ø		Applicable Thickness		
UL94V-2	UL94V-0			PCB	Chassis	PCB	Chassis	
055 4000	055 4010	5.0	5.0	4.0	5.5	1.6	0.5~1.0	500
055 4001	055 4011	6.0	5.0	4.0	5.5	1.6	0.5~1.0	500
055 4002	055 4012	8.0	5.0	4.0	5.5	1.6	0.5~1.0	500
055 4003	055 4013	10.0	5.0	4.0	5.5	1.6	0.5~1.0	500
055 4004	055 4014	12.0	5.0	4.0	5.5	1.6	0.5~1.0	500
055 4005	055 4015	14.0	5.0	4.0	5.5	1.6	0.5~1.0	500
055 4006	055 4016	16.0	5.0	4.0	5.5	1.6	0.5~1.0	500
055 4007	055 4017	18.0	5.0	4.0	5.5	1.6	0.5~1.0	500
055 4008	055 4018	6.2	4.6	3.2	4.8	1.6	0.5~1.0	500
055 4009	055 4019	12.8	4.6	3.2	4.8	1.6	0.5~1.0	500

Material: Nylon 66
RoHS Directive 2002/95/EC compliant

Colours:
UL94V-2: Natural
UL94V-0: White



- Inserts into the underside of the chassis
- Protrusion below the chassis is less than 1.7, making this series ideal when space is limited



Figures in boxes are the dimensions for 055 4008, 055 4008, 055 4018 and 055 4019

* The mid-section designs of the 055 4000, 055 4001, 055 4010 and 055 4011 are different

Cablectrix

distributors of quality cable accessories, tooling and printers

Tel: 01327 876769
Fax: 01327 300130
Email: sales@cablectrix.co.uk
www.cablectrix.co.uk



Circuit Board Spacers SHCBS Series

PART NUMBER		Dimensions						Unit Quantity
		A	B	Mounting Holes ø		Applicable Thickness		
UL94V-2	UL94V-0			PCB	Chassis	PCB	Chassis	
055 8000	055 8007	7.9	10.3	4.0	4.8	1.6	0.5~2.0	500
055 8001	055 8008	9.5	11.9	4.0	4.8	1.6	0.5~2.0	500
055 8002	055 8009	12.6	15.0	4.0	4.8	1.6	0.5~2.0	500
055 8003	055 8010	15.8	18.2	4.0	4.8	1.6	0.5~2.0	500
055 8004	055 8011	19.0	21.4	4.0	4.8	1.6	0.5~2.0	500
055 8005	055 8012	22.2	24.6	4.0	4.8	1.6	0.5~2.0	500
055 8006	055 8013	25.8	27.7	4.0	4.8	1.6	0.5~2.0	500

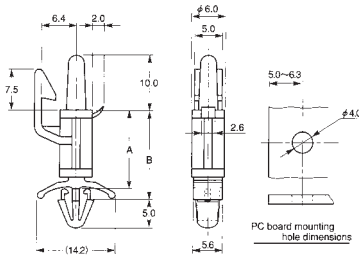
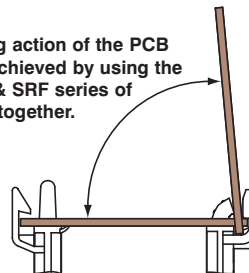
Material: Nylon 66
RoHS Directive 2002/95/EC compliant

Colours:
UL94V-2: Natural
UL94V-0: White



- Easily installed and removed, making inspection and maintenance of PC boards easier
- A hinging action can be achieved when used together with the SRF series of spacers
- Designed to accompany SRF series when creating a lifting hinge action with the PCB

A hinging action of the PCB can be achieved by using the SHCBS & SRF series of spacers together.



PC board mounting hole dimensions

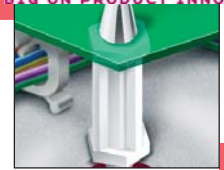
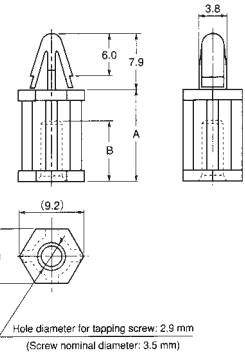
Circuit Board Spacers STBS Series

PART NUMBER		Dimensions				Unit Quantity
		A	B	PCB		
UL94V-2	UL94V-0			Mounting Hole ϕ	Applicable Thickness	
056 1000	056 1009	6.4	6.2	4.0	1.6	500
056 1001	056 1010	9.6	8.4	4.0	1.6	500
056 1002	056 1011	12.7	8.4	4.0	1.6	500
056 1003	056 1012	15.9	8.4	4.0	1.6	500
056 1004	056 1013	19.1	8.4	4.0	1.6	500
056 1005	056 1014	22.3	8.4	4.0	1.6	500
056 1006	056 1015	25.4	8.4	4.0	1.6	500
056 1007	056 1016	28.6	8.4	4.0	1.6	500
056 1008	056 1017	35.7	8.4	4.0	1.6	500

Material: Nylon 66
RoHS Directive 2002/95/EC compliant

- Secured to the chassis by a self-tapping screw
- Only the screw head protrudes below the chassis, making these spacers ideal when space is limited

Colours:
UL94V-2: Natural
UL94V-0: White



2
PCB Accessories

Circuit Board Spacers LT Series

PART NUMBER	Dimensions		Barb Style	Unit Quantity
	A Spacing	B Overall		
055 3640	4.8	22.0	Tension	1,000
055 3670	4.8	21.2	Locking	1,000
055 3641	6.4	23.8	Tension	1,000
055 3671	6.4	22.6	Locking	1,000
055 3642	9.5	26.8	Tension	1,000
055 3672	9.5	25.8	Locking	1,000
055 3643	11.0	28.2	Tension	1,000
055 3673	11.0	27.3	Locking	1,000
055 3644	12.7	30.0	Tension	1,000
055 3674	12.7	29.0	Locking	1,000
055 3645	15.9	33.0	Tension	1,000
055 3675	15.9	32.4	Locking	1,000
055 3646	19.0	36.3	Tension	1,000
055 3676	19.0	35.4	Locking	1,000
055 3647	22.2	39.5	Tension	1,000
055 3677	22.2	38.6	Locking	1,000
055 3648	25.5	42.7	Tension	1,000
055 3678	25.5	41.9	Locking	1,000

Material: Nylon 66
Colour: Natural
Flammability Rating: UL94V-2
Material Temperature Rating: 85°C

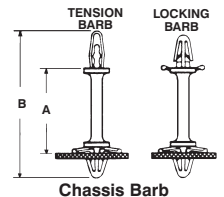
Recognized under the Component Program of Underwriters' Laboratories File No. E197049

- Two Styles:
1. Chassis barb end plus tension barb end for PCB
 2. Chassis barb end plus locking barb end for PCB

RoHS Directive 2002/95/EC compliant



Tolerances: A & B = ± 0.41



Barb Data		Mounting Data		
Type	Length	Chassis or PCB	Mounting Hole ϕ	Max. Chassis or PCB Thickness
Chassis	5.1	Chassis	4.8	1.8
Tension	10.2	PCB	4.0	1.6
Locking	8.9	PCB	4.0	1.6

- Provides spacing between the printed circuit board and chassis, or between circuit boards
- Wide, ribbed wings produce a secure fit with extra stability

Circuit Board Spacers DE Series



PART NUMBER	L Length	Unit Quantity
054 5515	3.18	1,000
054 5516	6.35	1,000
054 5517	7.92	1,000
054 5518	9.53	1,000
054 5519	11.10	1,000
054 5520	12.70	1,000
054 5521	15.88	1,000
054 5522	19.05	1,000
054 5523	22.23	1,000
054 5524	25.40	1,000

Material: Nylon 66
Colour: Natural

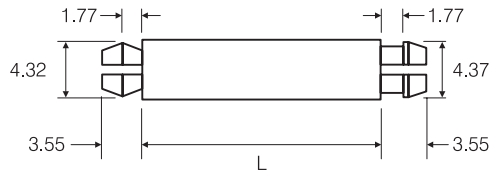
Suggested Mounting Hole Diameter: $3.86 \pm .05$

Flammability Rating: UL94V-2
Material Temperature Rating: 85°C

- Easy to install - simply snap into place to hold the PCB in position
- Integral locking clip provides a secure yet releasable fixing

RoHS Directive 2002/95/EC compliant

Tolerances:
L = ± 0.127



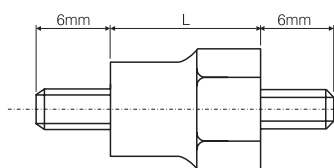
Micro Standoffs

PART NUMBER	Thread	Hexagon A/F	L	Type	External Thread Length	Internal Thread Depth	Unit Quantity
053 4050	M3	7.0	4.0	A	6.0	-	100
053 4051	M3	7.0	5.0	A	6.0	-	100
053 4052	M3	7.0	6.0	A	6.0	-	100
053 4053	M3	7.0	7.0	A	6.0	-	100
053 4054	M3	7.0	8.0	A	6.0	-	100
053 4055	M3	7.0	9.0	A	6.0	-	100
053 4056	M3	7.0	10.0	A	6.0	-	100
053 4057	M3	7.0	11.0	A	6.0	-	100
053 4058	M3	7.0	12.0	A	6.0	-	100
053 4059	M3	7.0	7.0	B	6.0	4.0	100
053 4060	M3	7.0	8.0	B	6.0	4.0	100
053 4061	M3	7.0	9.0	B	6.0	4.0	100
053 4062	M3	7.0	10.0	B	6.0	4.0	100
053 4063	M3	7.0	11.0	B	6.0	4.0	100
053 4064	M3	7.0	12.0	B	6.0	4.0	100
053 4065	M3	7.0	9.0	C	-	4.0	100
053 4066	M3	7.0	10.0	C	-	4.0	100
053 4067	M3	7.0	11.0	C	-	4.0	100
053 4068	M3	7.0	12.0	C	-	4.0	100

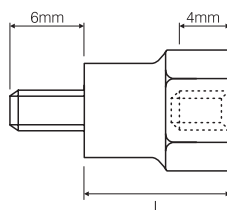
Material: Body: Nylon 6 Insert: Brass
Colour: Body: Natural Insert: Bright Nickel
Flammability: UL94HB
Operating Temperature: -30°C to +85°C

- Can be supplied in intermediate body and non-standard thread lengths if required
- Other thread sizes and body colours are also available. Please contact our Sales Department for further information

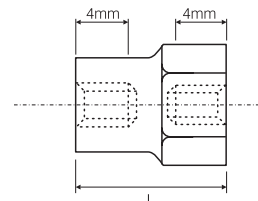
RoHS Directive 2002/95/EC compliant



Type A



Type B



Type C



PART NUMBER	L Length	B & C Thread Length	A Body Dia.	Thread Size	Unit Quantity
053 7002	15	6.0	8.0	M2.5 x .4	100
053 7007	20	6.0	8.0	M2.5 x .4	100
053 7012	25	6.0	8.0	M2.5 x .4	100
053 7017	30	6.0	8.0	M2.5 x .4	100
053 7022	35	6.0	8.0	M2.5 x .4	100
053 7028	40	6.0	8.0	M2.5 x .4	100
053 7033	45	6.0	8.0	M2.5 x .4	100
053 7038	50	6.0	8.0	M2.5 x .4	100
053 7102	15	6.0	8.0	M3 x .5	100
053 7107	20	6.0	8.0	M3 x .5	100
053 7112	25	6.0	8.0	M3 x .5	100
053 7117	30	6.0	8.0	M3 x .5	100
053 7122	35	6.0	8.0	M3 x .5	100
053 7128	40	6.0	8.0	M3 x .5	100
053 7133	45	6.0	8.0	M3 x .5	100
053 7138	50	6.0	8.0	M3 x .5	100
053 7207	20	6.0	8.0	M3.5 x .6	100
053 7212	25	6.0	8.0	M3.5 x .6	100
053 7217	30	6.0	8.0	M3.5 x .6	100
053 7222	35	6.0	8.0	M3.5 x .6	100
053 7228	40	6.0	8.0	M3.5 x .6	100
053 7233	45	6.0	8.0	M3.5 x .6	100
053 7238	50	6.0	8.0	M3.5 x .6	100
053 7307	20	6.0	8.0	M4 x .7	100
053 7312	25	6.0	8.0	M4 x .7	100
053 7317	30	6.0	8.0	M4 x .7	100
053 7322	35	6.0	8.0	M4 x .7	100
053 7328	40	6.0	8.0	M4 x .7	100
053 7333	45	6.0	8.0	M4 x .7	100
053 7338	50	6.0	8.0	M4 x .7	100

PART NUMBER	L Length	B & C Thread Length	A Body Dia.	Thread Size	Unit Quantity
053 7407	20	8.90	9.5	M5 x .8	100
053 7412	25	10.0	9.5	M5 x .8	100
053 7417	30	10.0	9.5	M5 x .8	100
*053 7428	40	10.0	9.5	M5 x .8	100
*053 7433	45	10.0	9.5	M5 x .8	100
*053 7438	50	10.0	9.5	M5 x .8	100
053 7512	25	11.5	12.7	M6 x 1.00	100
053 7517	30	12.0	12.7	M6 x 1.00	100
053 7528	40	12.0	12.7	M6 x 1.00	100
053 7533	45	12.0	12.7	M6 x 1.00	100
053 7538	50	12.0	12.7	M6 x 1.00	100
*053 7617	30	14.0	15.9	M8 x 1.25	100
*053 7622	35	14.0	15.9	M8 x 1.25	100
*053 7628	40	14.0	15.9	M8 x 1.25	100
*053 7633	45	14.0	15.9	M8 x 1.25	100
*053 7638	50	14.0	15.9	M8 x 1.25	100
*053 7643	55	14.0	15.9	M8 x 1.25	100
*053 7648	60	14.0	15.9	M8 x 1.25	100
*053 7654	65	14.0	15.9	M8 x 1.25	100
*053 7659	70	14.0	15.9	M8 x 1.25	100
*053 7717	30	14.0	19.0	M8 x 1.25	100
*053 7722	35	14.0	19.0	M8 x 1.25	100
*053 7728	40	14.0	19.0	M8 x 1.25	100
*053 7733	45	14.0	19.0	M8 x 1.25	100
*053 7738	50	14.0	19.0	M8 x 1.25	100
*053 7743	55	14.0	19.0	M8 x 1.25	100
*053 7748	60	14.0	19.0	M8 x 1.25	100
*053 7754	65	14.0	19.0	M8 x 1.25	100
*053 7759	70	14.0	19.0	M8 x 1.25	100
*053 7833	45	20.0	25.0	M10 x 1.50	100
*053 7838	50	20.0	25.0	M10 x 1.50	100
*053 7843	55	20.0	25.0	M10 x 1.50	100
*053 7848	60	20.0	25.0	M10 x 1.50	100
*053 7854	65	20.0	25.0	M10 x 1.50	100
*053 7859	70	20.0	25.0	M10 x 1.50	100
*053 7864	75	20.0	25.0	M10 x 1.50	100
*053 7869	80	20.0	25.0	M10 x 1.50	100

Material: Nylon 66
Body: Nylon 66
Insert: Brass CZ12I
Colour: Ivory

Flammability: UL94HB
Operating Temperature: -30°C to +85°C

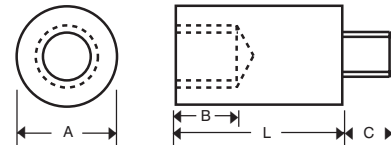
RoHS Directive 2002/95/EC compliant **RoHS ✓**

- Nylon 66 body combined with Brass insert provides fully insulated and strong fixing for Printed Circuit Boards and Busbars etc
- Other lengths, materials and designs can be supplied. Please contact our Sales Department for more information

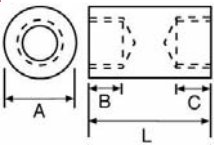
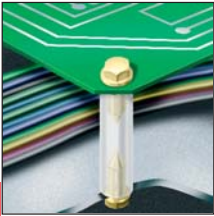
* Available in natural nylon only

'A' dimension swells up to 0.5 around insert

Body diameter is nominal



Female - Female Heavy Duty Standoffs



PART NUMBER	L Length	B & C Thread Length	A Body Dia.	Thread Size	Unit Quantity
053 6002	15	6.0	8.0	M2.5 x .4	100
053 6007	20	6.0	8.0	M2.5 x .4	100
053 6012	25	6.0	8.0	M2.5 x .4	100
053 6017	30	6.0	8.0	M2.5 x .4	100
053 6022	35	6.0	8.0	M2.5 x .4	100
053 6028	40	6.0	8.0	M2.5 x .4	100
053 6033	45	6.0	8.0	M2.5 x .4	100
053 6038	50	6.0	8.0	M2.5 x .4	100
053 6102	15	6.0	8.0	M3 x .5	100
053 6107	20	6.0	8.0	M3 x .5	100
053 6112	25	6.0	8.0	M3 x .5	100
053 6117	30	6.0	8.0	M3 x .5	100
053 6122	35	6.0	8.0	M3 x .5	100
053 6128	40	6.0	8.0	M3 x .5	100
053 6133	45	6.0	8.0	M3 x .5	100
053 6138	50	6.0	8.0	M3 x .5	100
053 6207	20	6.0	8.0	M3.5 x .6	100
053 6212	25	6.0	8.0	M3.5 x .6	100
053 6217	30	6.0	8.0	M3.5 x .6	100
053 6222	35	6.0	8.0	M3.5 x .6	100
053 6228	40	6.0	8.0	M3.5 x .6	100
053 6233	45	6.0	8.0	M3.5 x .6	100
053 6238	50	6.0	8.0	M3.5 x .6	100
053 6307	20	6.0	8.0	M4 x .7	100
053 6312	25	6.0	8.0	M4 x .7	100
053 6317	30	6.0	8.0	M4 x .7	100
053 6322	35	6.0	8.0	M4 x .7	100
053 6326	38	6.0	8.0	M4 x .7	100
053 6328	40	6.0	8.0	M4 x .7	100
053 6333	45	6.0	8.0	M4 x .7	100
053 6338	50	6.0	8.0	M4 x .7	100

Material:
Body: Nylon 66
Insert: Brass CZ121
Colour: Ivory

Flammability: UL94HB
Operating Temperature: -30°C to +85°C

RoHS Directive 2002/95/EC compliant **RoHS ✓**

- Nylon 66 body combined with Brass insert provides fully insulated and strong fixing for Printed Circuit Boards and Busbars etc
- Other lengths, materials and designs can be supplied. Please contact our Sales Department for further information

PART NUMBER	L Length	B & C Thread Length	A Body Dia.	Thread Size	Unit Quantity
053 6407	20	8.90	9.5	M5 x .8	100
053 6412	25	10.0	9.5	M5 x .8	100
053 6417	30	10.0	9.5	M5 x .8	100
*053 6428	40	10.0	9.5	M5 x .8	100
*053 6433	45	10.0	9.5	M5 x .8	100
*053 6438	50	10.0	9.5	M5 x .8	100
053 6512	25	11.5	12.7	M6 x 1.00	100
053 6517	30	12.0	12.7	M6 x 1.00	100
053 6528	40	12.0	12.7	M6 x 1.00	100
053 6533	45	12.0	12.7	M6 x 1.00	100
053 6538	50	12.0	12.7	M6 x 1.00	100
*053 6617	30	12.0	15.9	M8 x 1.25	100
*053 6622	35	12.0	15.9	M8 x 1.25	100
*053 6628	40	12.0	15.9	M8 x 1.25	100
*053 6633	45	12.0	15.9	M8 x 1.25	100
*053 6638	50	12.0	15.9	M8 x 1.25	100
*053 6643	55	12.0	15.9	M8 x 1.25	100
*053 6648	60	12.0	15.9	M8 x 1.25	100
*053 6654	65	12.0	15.9	M8 x 1.25	100
*053 6659	70	12.0	15.9	M8 x 1.25	100
*053 6717	30	14.0	19.0	M8 x 1.25	100
*053 6722	35	14.0	19.0	M8 x 1.25	100
*053 6728	40	14.0	19.0	M8 x 1.25	100
*053 6733	45	14.0	19.0	M8 x 1.25	100
*053 6738	50	14.0	19.0	M8 x 1.25	100
*053 6743	55	14.0	19.0	M8 x 1.25	100
*053 6748	60	14.0	19.0	M8 x 1.25	100
*053 6754	65	14.0	19.0	M8 x 1.25	100
*053 6759	70	14.0	19.0	M8 x 1.25	100
*053 6833	45	20.0	25.0	M10 x 1.50	100
*053 6838	50	20.0	25.0	M10 x 1.50	100
*053 6843	55	20.0	25.0	M10 x 1.50	100
*053 6848	60	20.0	25.0	M10 x 1.50	100
*053 6854	65	20.0	25.0	M10 x 1.50	100
*053 6859	70	20.0	25.0	M10 x 1.50	100
*053 6864	75	20.0	25.0	M10 x 1.50	100
*053 6869	80	20.0	25.0	M10 x 1.50	100

* Available in natural nylon only

'A' dimension swells up to 0.5 around insert

Body diameter is nominal





PART NUMBER	L Length	B & C Thread Length	A Body Dia.	Thread Size	Unit Quantity
053 8002	15	6.0	8.0	M2.5 x .4	100
053 8007	20	6.0	8.0	M2.5 x .4	100
053 8012	25	6.0	8.0	M2.5 x .4	100
053 8017	30	6.0	8.0	M2.5 x .4	100
053 8022	35	6.0	8.0	M2.5 x .4	100
053 8028	40	6.0	8.0	M2.5 x .4	100
053 8033	45	6.0	8.0	M2.5 x .4	100
053 8038	50	6.0	8.0	M2.5 x .4	100
053 8102	15	6.0	8.0	M3 x .5	100
053 8107	20	6.0	8.0	M3 x .5	100
053 8112	25	6.0	8.0	M3 x .5	100
053 8117	30	6.0	8.0	M3 x .5	100
053 8122	35	6.0	8.0	M3 x .5	100
053 8128	40	6.0	8.0	M3 x .5	100
053 8133	45	6.0	8.0	M3 x .5	100
053 8138	50	6.0	8.0	M3 x .5	100
053 8207	20	6.0	8.0	M3.5 x .6	100
053 8212	25	6.0	8.0	M3.5 x .6	100
053 8217	30	6.0	8.0	M3.5 x .6	100
053 8222	35	6.0	8.0	M3.5 x .6	100
053 8228	40	6.0	8.0	M3.5 x .6	100
053 8233	45	6.0	8.0	M3.5 x .6	100
053 8238	50	6.0	8.0	M3.5 x .6	100
053 8307	20	6.0	8.0	M4 x .7	100
053 8312	25	6.0	8.0	M4 x .7	100
053 8317	30	6.0	8.0	M4 x .7	100
053 8322	35	6.0	8.0	M4 x .7	100
053 8328	40	6.0	8.0	M4 x .7	100
053 8333	45	6.0	8.0	M4 x .7	100
053 8338	50	6.0	8.0	M4 x .7	100

PART NUMBER	L Length	B & C Thread Length	A Body Dia.	Thread Size	Unit Quantity
053 8407	20	8.90	9.5	M5 x .8	100
053 8412	25	10.0	9.5	M5 x .8	100
053 8417	30	10.0	9.5	M5 x .8	100
*053 8428	40	10.0	9.5	M5 x .8	100
*053 8433	45	10.0	9.5	M5 x .8	100
*053 8438	50	10.0	9.5	M5 x .8	100
053 8512	25	11.5	12.7	M6 x 1.00	100
053 8517	30	12.0	12.7	M6 x 1.00	100
053 8528	40	12.0	12.7	M6 x 1.00	100
053 8533	45	12.0	12.7	M6 x 1.00	100
053 8538	50	12.0	12.7	M6 x 1.00	100
*053 8617	30	14.0	15.9	M8 x 1.25	100
*053 8622	35	14.0	15.9	M8 x 1.25	100
*053 8628	40	14.0	15.9	M8 x 1.25	100
*053 8633	45	14.0	15.9	M8 x 1.25	100
*053 8638	50	14.0	15.9	M8 x 1.25	100
*053 8643	55	14.0	15.9	M8 x 1.25	100
*053 8648	60	14.0	15.9	M8 x 1.25	100
*053 8654	65	14.0	15.9	M8 x 1.25	100
*053 8659	70	14.0	15.9	M8 x 1.25	100
*053 8717	30	14.0	19.0	M8 x 1.25	100
*053 8722	35	14.0	19.0	M8 x 1.25	100
*053 8728	40	14.0	19.0	M8 x 1.25	100
*053 8733	45	14.0	19.0	M8 x 1.25	100
*053 8738	50	14.0	19.0	M8 x 1.25	100
*053 8743	55	14.0	19.0	M8 x 1.25	100
*053 8748	60	14.0	19.0	M8 x 1.25	100
*053 8754	65	14.0	19.0	M8 x 1.25	100
*053 8759	70	14.0	19.0	M8 x 1.25	100
*053 8833	45	20.0	25.0	M10 x 1.50	100
*053 8838	50	20.0	25.0	M10 x 1.50	100
*053 8543	55	20.0	25.0	M10 x 1.50	100
*053 8848	60	20.0	25.0	M10 x 1.50	100
*053 8854	65	20.0	25.0	M10 x 1.50	100
*053 8859	70	20.0	25.0	M10 x 1.50	100
*053 8864	75	20.0	25.0	M10 x 1.50	100
*053 8869	80	20.0	25.0	M10 x 1.50	100

Material:
 Body: Nylon 66
 Insert: Brass CZ121
 Colour: Ivory

Flammability: UL94HB
 Operating Temperature: -30°C to +85°C

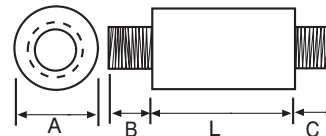
RoHS Directive 2002/95/EC compliant **RoHS ✓**

- Nylon 66 body combined with Brass insert provides fully insulated and strong fixing for Printed Circuit Boards and Busbars etc
- Other lengths, materials and designs can be supplied. Please contact our Sales Department for further information

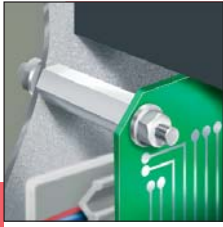
* Available in natural nylon only

'A' dimension swells up to 0.5 around insert

Body diameter is nominal



Hexagon Standoffs

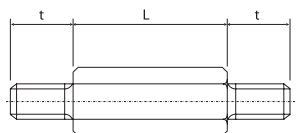


PART NUMBER	Thread	Hexagon A/F	L	Type	t	Unit Quantity
053 9000	M3	6.4	15.0	A	6.0	100
053 9001	M3	6.4	20.0	A	6.0	100
053 9002	M3	6.4	25.0	A	6.0	100
053 9003	M3	6.4	30.0	A	6.0	100
053 9004	M3	6.4	35.0	A	6.0	100
053 9005	M3	6.4	40.0	A	6.0	100
053 9006	M3	6.4	45.0	A	6.0	100
053 9007	M3	6.4	50.0	A	6.0	100
053 9008	M4	8.0	15.0	A	6.0	100
053 9009	M4	8.0	20.0	A	6.0	100
053 9010	M4	8.0	25.0	A	6.0	100
053 9011	M4	8.0	30.0	A	6.0	100
053 9012	M4	8.0	35.0	A	6.0	100
053 9013	M4	8.0	40.0	A	6.0	100
053 9014	M4	8.0	45.0	A	6.0	100
053 9015	M4	8.0	50.0	A	6.0	100
053 9016	M4	8.0	55.0	A	6.0	100
053 9017	M4	8.0	60.0	A	6.0	100
053 9018	M4	8.0	65.0	A	6.0	100
053 9019	M4	8.0	70.0	A	6.0	100
053 9020	M4	8.0	75.0	A	6.0	100
053 9044	M3	6.4	15.0	B	6.0	100
053 9045	M3	6.4	20.0	B	6.0	100
053 9046	M3	6.4	25.0	B	6.0	100
053 9047	M3	6.4	30.0	B	6.0	100
053 9048	M3	6.4	35.0	B	6.0	100
053 9049	M3	6.4	40.0	B	6.0	100
053 9050	M3	6.4	45.0	B	6.0	100
053 9051	M3	6.4	50.0	B	6.0	100
053 9052	M4	8.0	15.0	B	6.0	100
053 9053	M4	8.0	20.0	B	6.0	100
053 9054	M4	8.0	25.0	B	6.0	100
053 9055	M4	8.0	30.0	B	6.0	100
053 9056	M4	8.0	35.0	B	6.0	100
053 9057	M4	8.0	40.0	B	6.0	100
053 9058	M4	8.0	45.0	B	6.0	100
053 9059	M4	8.0	50.0	B	6.0	100
053 9060	M4	8.0	55.0	B	6.0	100
053 9061	M4	8.0	60.0	B	6.0	100
053 9062	M4	8.0	65.0	B	6.0	100
053 9063	M4	8.0	70.0	B	6.0	100
053 9064	M4	8.0	75.0	B	6.0	100
053 9088	M3	6.4	15.0	C	6.0	100
053 9089	M3	6.4	20.0	C	6.0	100
053 9090	M3	6.4	25.0	C	6.0	100
053 9091	M3	6.4	30.0	C	6.0	100
053 9092	M3	6.4	35.0	C	6.0	100
053 9093	M3	6.4	40.0	C	6.0	100
053 9094	M3	6.4	45.0	C	6.0	100
053 9095	M3	6.4	50.0	C	6.0	100
053 9096	M4	8.0	15.0	C	6.0	100
053 9097	M4	8.0	20.0	C	6.0	100
053 9098	M4	8.0	25.0	C	6.0	100
053 9099	M4	8.0	30.0	C	6.0	100
053 9100	M4	8.0	35.0	C	6.0	100
053 9101	M4	8.0	40.0	C	6.0	100
053 9102	M4	8.0	45.0	C	6.0	100
053 9103	M4	8.0	50.0	C	6.0	100
053 9104	M4	8.0	55.0	C	6.0	100
053 9105	M4	8.0	60.0	C	6.0	100
053 9106	M4	8.0	65.0	C	6.0	100
053 9107	M4	8.0	70.0	C	6.0	100
053 9108	M4	8.0	75.0	C	6.0	100

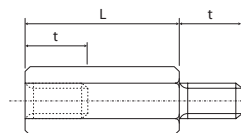
Material: Body: Nylon 6 Insert: Brass
 Colour: Body: Natural Insert: Bright nickel
 Flammability: UL94HB
 Operating Temperature: -30°C to +85°C

Can be supplied in intermediate body and non-standard thread lengths if required
 Alternative body colours are also available.
 Please contact our Sales Department for further information

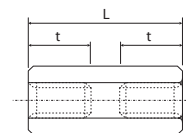
RoHS Directive
 2002/95/EC
 compliant



Type A



Type B



Type C

Male - Female Metal Threaded Standoffs

PART NUMBER	A & B	C	D	E	F	G	H	Unit Quantity
053 2000	M3	8.0	5.0	5.0	1.0	3.0	4.0	500
053 2001	M3	8.0	6.0	5.0	1.0	3.0	4.0	500
053 2002	M3	8.0	7.0	5.0	1.0	3.0	4.0	500
053 2003	M3	8.0	8.0	5.0	1.0	4.0	6.0	500
053 2004	M3	8.0	9.0	5.0	1.0	4.0	6.0	500
053 2005	M3	8.0	10.0	5.0	1.0	6.0	8.0	500
053 2006	M3	8.0	11.0	5.0	1.0	6.0	8.0	500
053 2007	M3	8.0	12.0	5.0	1.0	8.0	10.0	500
053 2008	M3	8.0	13.0	5.0	1.0	8.0	10.0	500
053 2009	M3	8.0	14.0	5.0	1.0	8.0	10.0	500
053 2010	M3	8.0	15.0	5.0	1.0	8.0	13.0	500
053 2011	M3	8.0	16.0	5.0	1.0	8.0	13.0	500
053 2012	M3	8.0	17.0	5.0	1.0	8.0	13.0	500
053 2013	M3	8.0	18.0	5.0	1.0	8.0	14.0	500
053 2014	M3	8.0	20.0	5.0	1.0	8.0	15.0	500
053 2016	M3	10.0	25.0	5.0	1.0	10.0	15.0	500
053 2017	M3	10.0	30.0	5.0	1.0	10.0	15.0	500
053 2019	M3	10.0	35.0	5.0	1.0	10.0	15.0	500
053 2020	M3	10.0	40.0	5.0	1.0	10.0	15.0	500
053 2021	M3	10.0	45.0	5.0	1.0	10.0	15.0	500
053 2022	M3	10.0	50.0	5.0	1.0	10.0	15.0	500

PART NUMBER	A & B	C	D	E	F	G	H	Unit Quantity
053 2036	M4	8.0	5.0	7.0	1.4	2.5	4.0	500
053 2037	M4	8.0	8.0	7.0	1.4	4.0	6.0	500
053 2038	M4	8.0	10.0	7.0	1.4	6.0	8.0	500
053 2039	M4	8.0	12.0	7.0	1.4	8.0	10.0	500
053 2040	M4	8.0	15.0	7.0	1.4	8.0	13.0	500
053 2041	M4	8.0	18.0	7.0	1.4	8.0	15.0	500
053 2042	M4	8.0	20.0	7.0	1.4	8.0	15.0	500
053 2043	M4	10.0	25.0	7.0	1.4	10.0	15.0	500
053 2044	M4	10.0	30.0	7.0	1.4	10.0	15.0	500
053 2045	M4	10.0	35.0	7.0	1.4	10.0	15.0	500
053 2046	M4	10.0	40.0	7.0	1.4	10.0	15.0	500
053 2047	M4	10.0	45.0	7.0	1.4	10.0	15.0	500
053 2048	M4	10.0	50.0	7.0	1.4	10.0	15.0	500

- Ideal for heavy duty and high temperature applications
- Can be supplied in other sizes and materials.
Please contact our Sales Department for further information



All metal product!

2

PCB Accessories

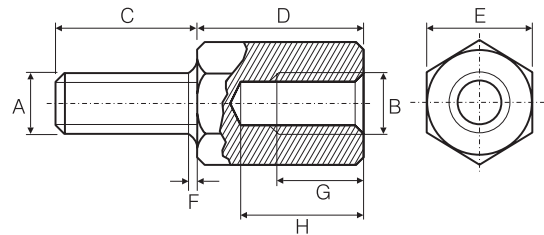
Material: Nickel Plated Brass

Colour: Silver

RoHS Directive 2002/95/EC compliant



Operating Temperature: -50°C to +300°C



Female - Female Metal Threaded Standoffs

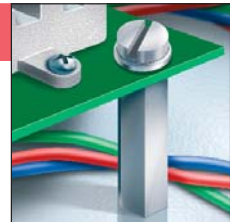
PART NUMBER	L	A	B	Unit Quantity
053 1000	5.0	M3	5.0	500
053 1001	6.0	M3	5.0	500
053 1002	7.0	M3	5.0	500
053 1003	8.0	M3	5.0	500
053 1004	9.0	M3	5.0	500
053 1005	10.0	M3	5.0	500
053 1006	11.0	M3	5.0	500
053 1007	12.0	M3	5.0	500
053 1008	13.0	M3	5.0	500
053 1009	14.0	M3	5.0	500
053 1010	15.0	M3	5.0	500
053 1011	16.0	M3	5.0	500
053 1012	17.0	M3	5.0	500
053 1013	18.0	M3	5.0	500
053 1014	20.0	M3	5.0	500
053 1016	25.0	M3	5.0	500
053 1017	30.0	M3	5.0	500
053 1019	35.0	M3	5.0	500
053 1020	40.0	M3	5.0	500
053 1021	45.0	M3	5.0	500
053 1022	50.0	M3	5.0	500

PART NUMBER	L	A	B	Unit Quantity
053 1036	5.0	M4	7.0	500
053 1037	8.0	M4	7.0	500
053 1038	10.0	M4	7.0	500
053 1039	12.0	M4	7.0	500
053 1040	15.0	M4	7.0	500
053 1041	18.0	M4	7.0	500
053 1042	20.0	M4	7.0	500
053 1043	25.0	M4	7.0	500
053 1044	30.0	M4	7.0	500
053 1045	35.0	M4	7.0	500
053 1046	40.0	M4	7.0	500
053 1047	45.0	M4	7.0	500
053 1048	50.0	M4	7.0	500

Parts of length up to and including 20mm are threaded all the way through

Parts of length of 25mm and over are threaded 10mm in from each end

- Ideal for heavy duty and high temperature applications
- Can be supplied in other sizes and materials.
Please contact our Sales Department for further information



All metal product!

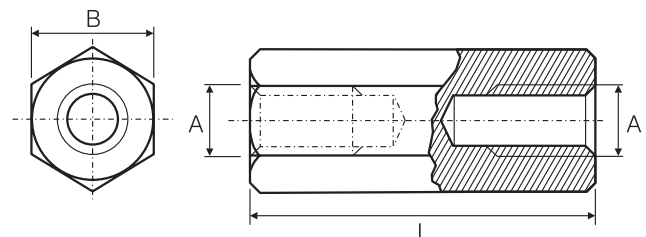
Material: Nickel Plated Brass

Colour: Silver

RoHS Directive 2002/95/EC compliant



Operating Temperature: -50°C to +300°C



Metric Male - Female Threaded Standoffs



2 PCB Accessories

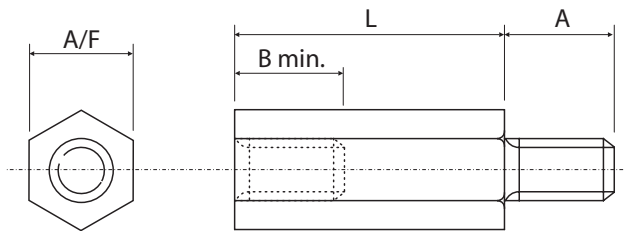
PART NUMBER	Thread Size	A/F	A	B min.	L	Unit Quantity
053 2100	M3 x 0.5	6.00	4.76	4.76	8.00	1,000
053 2101	M3 x 0.5	6.00	4.76	4.76	10.00	1,000
053 2102	M3 x 0.5	6.00	4.76	4.76	11.00	1,000
053 2103	M3 x 0.5	6.00	4.76	4.76	12.00	1,000
053 2104	M3 x 0.5	6.00	4.76	4.76	13.00	1,000
053 2105	M3 x 0.5	6.00	4.76	4.76	14.00	1,000
053 2106	M3 x 0.5	6.00	4.76	4.76	16.00	1,000
053 2107	M3 x 0.5	6.00	4.76	4.76	22.00	1,000
053 2108	M3 x 0.5	6.00	4.76	4.76	25.00	1,000
053 2200	M3.5 x 0.6	6.00	6.35	6.35	10.00	1,000
053 2201	M3.5 x 0.6	6.00	6.35	6.35	11.00	1,000
053 2202	M3.5 x 0.6	6.00	6.35	6.35	12.00	1,000
053 2203	M3.5 x 0.6	6.00	6.35	6.35	13.00	1,000
053 2204	M3.5 x 0.6	6.00	6.35	6.35	14.00	1,000
053 2205	M3.5 x 0.6	6.00	6.35	6.35	16.00	1,000
053 2206	M3.5 x 0.6	6.00	6.35	6.35	19.00	1,000
053 2207	M3.5 x 0.6	6.00	6.35	6.35	20.00	1,000
053 2208	M3.5 x 0.6	6.00	6.35	6.35	22.00	1,000
053 2209	M3.5 x 0.6	6.00	6.35	6.35	25.00	1,000
053 2300	M4 x 0.7	6.00	9.53	9.53	12.00	1,000
053 2301	M4 x 0.7	6.00	9.53	9.53	13.00	1,000
053 2302	M4 x 0.7	6.00	9.53	9.53	14.00	1,000
053 2303	M4 x 0.7	6.00	9.53	9.53	15.00	1,000
053 2304	M4 x 0.7	6.00	9.53	9.53	16.00	1,000
053 2305	M4 x 0.7	6.00	9.53	9.53	18.00	1,000
053 2306	M4 x 0.7	6.00	9.53	9.53	19.00	1,000
053 2307	M4 x 0.7	6.00	9.53	9.53	20.00	1,000
053 2308	M4 x 0.7	6.00	9.53	9.53	22.00	1,000
053 2309	M4 x 0.7	6.00	9.53	9.53	25.00	1,000

Material: Nylon 66
 Colour: Natural
 Flammability: UL94V-2

RoHS Directive 2002/95/EC compliant **RoHS ✓**

- Hexagon form allows easy retention during installation of fixing
- Threaded bore provides a positive fixing to metric screws & studs
- Threaded stud provides a positive fixing to metric threaded nuts
- Excellent electrical insulative properties

Tolerances:
 A/F, A & L = ± 0.38
 B = +0.15 / -0



Metric Hexagon Threaded Spacers

PART NUMBER	Thread Size	L Length	Unit Quantity
013 0855	M3 x .5	6.35	500
013 0856	M3 x .5	9.53	500
013 0857	M3 x .5	12.70	500
013 0858	M3 x .5	15.88	500
013 0859	M3 x .5	19.05	500
013 0860	M3 x .5	22.22	500
013 0861	M3 x .5	25.40	500

PART NUMBER	Thread Size	L Length	Unit Quantity
013 0873	M4 x .7	6.35	500
013 0874	M4 x .7	9.53	500
013 0875	M4 x .7	12.70	500
013 0876	M4 x .7	15.88	500
013 0877	M4 x .7	19.05	500
013 0878	M4 x .7	22.22	500
013 0879	M4 x .7	25.40	500

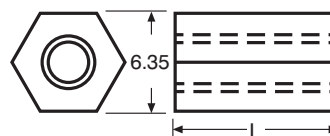
Spacers 19.05 long and over are only tapped 9.53 in from each end

Material: Nylon 66
 Colour: Natural
 Flammability: UL94V-2

RoHS Directive 2002/95/EC compliant **RoHS ✓**

- Hexagon form allows easy retention during installation of fixing
- Threaded bore provides a positive fixing to machine screws & studs

Tolerances:
 L & A/F = ± .38



Metric Round Threaded Spacers

PART NUMBER	Thread Size	L Length	A	Unit Quantity
012 0780	M3 x .5	6.35	6.35	1,000
012 0781	M3 x .5	9.53	6.35	1,000
012 0782	M3 x .5	12.70	6.35	1,000
012 0783	M3 x .5	15.88	6.35	1,000
012 0784	M3 x .5	19.05	6.35	1,000
012 0785	M3 x .5	22.22	6.35	1,000
012 0786	M3 x .5	25.40	6.35	1,000
012 0800	M3.5 x .6	6.35	6.35	1,000
012 0801	M3.5 x .6	9.53	6.35	1,000
012 0802	M3.5 x .6	12.70	6.35	1,000
012 0803	M3.5 x .6	15.88	6.35	1,000
012 0804	M3.5 x .6	19.05	6.35	1,000
012 0805	M3.5 x .6	22.22	6.35	1,000
012 0806	M3.5 x .6	25.40	6.35	1,000
012 0810	M4 x .7	6.35	6.35	500
012 0811	M4 x .7	9.53	6.35	500
012 0812	M4 x .7	12.70	6.35	500
012 0813	M4 x .7	15.88	6.35	500
012 0814	M4 x .7	19.05	6.35	500
012 0815	M4 x .7	22.22	6.35	500
012 0816	M4 x .7	25.40	6.35	500

PART NUMBER	Thread Size	L Length	A	Unit Quantity
012 0822	M4 x.7	6.35	7.94	500
012 0823	M4 x.7	9.53	7.94	500
012 0824	M4 x.7	12.70	7.94	500
012 0825	M4 x.7	15.88	7.94	500
012 0826	M4 x.7	19.05	7.94	500
012 0827	M4 x.7	22.22	7.94	500
012 0828	M4 x.7	25.40	7.94	500
012 0832	M5 x.8	6.35	9.53	500
012 0833	M5 x.8	9.53	9.53	500
012 0834	M5 x.8	12.70	9.53	500
012 0835	M5 x.8	15.88	9.53	500
012 0836	M5 x.8	19.05	9.53	500
012 0837	M5 x.8	22.22	9.53	500
012 0838	M5 x.8	25.40	9.53	500
012 0842	M5 x.8	6.35	12.70	500
012 0843	M5 x.8	9.53	12.70	500
012 0844	M5 x.8	12.70	12.70	500
012 0845	M5 x.8	15.88	12.70	500
012 0846	M5 x.8	19.05	12.70	500
012 0847	M5 x.8	22.22	12.70	500
012 0848	M5 x.8	25.40	12.70	500

Material: Nylon 66

Colour: Natural

Flammability: UL94V-2

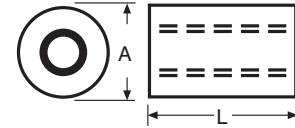
Spacers 19.05 long and over are only tapped 9.53 in from each end

- Threaded bore provides a positive fixing to machine screws and studs

RoHS Directive 2002/95/EC compliant



Tolerances: L & A = ± 0.38



Hexagon Spacers

PART NUMBER	L Length	I/D	Self Tapping Screw Size	Unit Quantity
050 5312	6.35	2.31	No.4	1,000
050 5313	9.53	2.31	No.4	1,000
050 5314	12.70	2.31	No.4	1,000
050 5315	15.88	2.31	No.4	1,000
050 5316	19.05	2.31	No.4	1,000
050 5317	22.22	2.31	No.4	1,000
050 5318	25.40	2.31	No.4	1,000
050 5321	6.35	2.92	No.6	1,000
050 5322	9.53	2.92	No.6	1,000
050 5323	12.70	2.92	No.6	1,000
050 5324	15.88	2.92	No.6	1,000
050 5325	19.05	2.92	No.6	1,000
050 5326	22.22	2.92	No.6	1,000
050 5327	25.40	2.92	No.6	1,000

PART NUMBER	L Length	I/D	Self Tapping Screw Size	Unit Quantity
050 5331	6.35	3.56	No.8	1,000
050 5332	9.53	3.56	No.8	1,000
050 5333	12.70	3.56	No.8	1,000
050 5334	15.88	3.56	No.8	1,000
050 5335	19.05	3.56	No.8	1,000
050 5336	22.22	3.56	No.8	1,000
050 5337	25.40	3.56	No.8	1,000

- Hexagon form allows easy retention during installation of fixing
- Ideal for use with metal self tapping screws

Material: Nylon 66

Colour: Natural

Flammability: UL94V-2

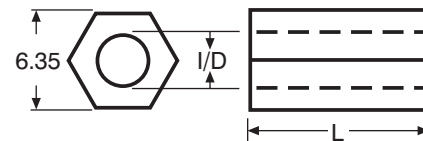
RoHS Directive 2002/95/EC compliant



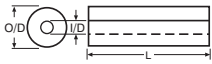
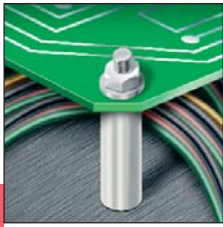
Tolerances:

I/D = ± 0.13

L & A/F = ± 0.38



Standard Round Plain Spacers



2
PCB Accessories

PART NUMBER	O/D	I/D	Unified Screw Size	L Length	Unit Quantity
048 4750	4.76	2.31	No. 2	3.18	1,000
048 4751	6.35	2.31	No. 2	3.18	1,000
048 4753	4.76	2.92	No. 4	3.18	1,000
048 4754	6.35	2.92	No. 4	3.18	1,000
048 4755	7.94	2.92	No. 4	3.18	1,000
048 4756	6.35	3.56	No. 6	3.18	1,000
048 4757	7.94	3.56	No. 6	3.18	1,000
048 4758	9.53	3.56	No. 6	3.18	1,000
048 4759	12.70	3.56	No. 6	3.18	1,000
048 4760	6.35	4.34	No. 8	3.18	1,000
048 4761	7.94	4.34	No. 8	3.18	1,000
048 4762	9.53	4.34	No. 8	3.18	1,000
048 4763	12.70	4.34	No. 8	3.18	1,000
048 4764	7.94	4.93	No. 10	3.18	1,000
048 4766	12.70	4.93	No. 10	3.18	1,000
048 4767	12.70	5.56	No. 12	3.18	1,000
048 4771	3.18	1.60	No. 1	4.76	1,000
048 4772	4.76	2.31	No. 2	4.76	1,000
048 4773	6.35	2.31	No. 2	4.76	1,000
048 4774	4.76	2.92	No. 4	4.76	1,000
048 4775	6.35	2.92	No. 4	4.76	1,000
048 4776	7.94	2.92	No. 4	4.76	1,000
048 4777	6.35	3.56	No. 6	4.76	1,000
048 4778	7.94	3.56	No. 6	4.76	1,000
048 4779	9.53	3.56	No. 6	4.76	1,000
048 4780	12.70	3.56	No. 6	4.76	1,000
048 4781	6.35	4.34	No. 8	4.76	1,000
048 4782	7.94	4.34	No. 8	4.76	1,000
048 4783	9.53	4.34	No. 8	4.76	1,000
048 4784	12.70	4.34	No. 8	4.76	1,000
048 4785	7.94	4.93	No. 10	4.76	1,000
048 4786	9.53	4.93	No. 10	4.76	1,000
048 4787	12.70	4.93	No. 10	4.76	1,000
048 4788	12.70	5.56	No. 12	4.76	1,000
048 4789	12.70	6.53	¼	4.76	1,000
048 4793	4.76	2.31	No. 2	6.35	1,000
048 4794	6.35	2.31	No. 2	6.35	1,000
048 4795	4.76	2.92	No. 4	6.35	1,000
048 4796	6.35	2.92	No. 4	6.35	1,000
048 4797	7.94	2.92	No. 4	6.35	1,000
048 4798	6.35	3.56	No. 6	6.35	1,000
048 4799	7.94	3.56	No. 6	6.35	1,000
048 4800	9.53	3.56	No. 6	6.35	1,000
048 4801	12.70	3.56	No. 6	6.35	1,000
048 4802	6.35	4.34	No. 8	6.35	1,000
048 4803	7.94	4.34	No. 8	6.35	1,000
048 4804	9.53	4.34	No. 8	6.35	1,000
048 4805	12.70	4.34	No. 8	6.35	1,000
048 4806	7.94	4.93	No. 10	6.35	1,000
048 4807	9.53	4.93	No. 10	6.35	1,000
048 4808	12.70	4.93	No. 10	6.35	1,000
048 4809	12.70	5.56	No. 12	6.35	1,000
048 4810	12.70	6.53	¼	6.35	1,000
048 4814	4.76	2.31	No. 2	7.94	1,000
048 4815	6.35	2.31	No. 2	7.94	1,000
048 4816	4.76	2.92	No. 4	7.94	1,000
048 4817	6.35	2.92	No. 4	7.94	1,000
048 4818	7.94	2.92	No. 4	7.94	1,000
048 4819	6.35	3.56	No. 6	7.94	1,000
048 4820	7.94	3.56	No. 6	7.94	1,000
048 4821	9.53	3.56	No. 6	7.94	1,000
048 4822	12.70	3.56	No. 6	7.94	1,000
048 4823	6.35	4.34	No. 8	7.94	1,000
048 4824	7.94	4.34	No. 8	7.94	1,000
048 4825	9.53	4.34	No. 8	7.94	1,000
048 4826	12.70	4.34	No. 8	7.94	1,000
048 4827	7.94	4.93	No. 10	7.94	1,000
048 4828	9.53	4.93	No. 10	7.94	1,000
048 4829	12.70	4.93	No. 10	7.94	1,000
048 4830	12.70	5.56	No. 12	7.94	1,000
048 4831	12.70	6.53	¼	7.94	1,000

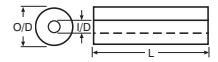
PART NUMBER	O/D	I/D	Unified Screw Size	L Length	Unit Quantity
048 4834	4.76	2.31	No. 2	9.53	1,000
048 4835	6.35	2.31	No. 2	9.53	1,000
048 4836	4.76	2.92	No. 4	9.53	1,000
048 4837	6.35	2.92	No. 4	9.53	1,000
048 4838	7.94	2.92	No. 4	9.53	1,000
048 4839	6.35	3.56	No. 6	9.53	1,000
048 4840	7.94	3.56	No. 6	9.53	1,000
048 4841	9.53	3.56	No. 6	9.53	1,000
048 4842	12.70	3.56	No. 6	9.53	1,000
048 4843	6.35	4.34	No. 8	9.53	1,000
048 4844	7.94	4.34	No. 8	9.53	1,000
048 4845	9.53	4.34	No. 8	9.53	1,000
048 4846	12.70	4.34	No. 8	9.53	1,000
048 4847	7.94	4.93	No. 10	9.53	1,000
048 4848	9.53	4.93	No. 10	9.53	1,000
048 4849	12.70	4.93	No. 10	9.53	1,000
048 4850	12.70	5.56	No. 12	9.53	1,000
048 4851	12.70	6.53	¼	9.53	1,000
048 4854	4.76	2.31	No. 2	11.11	1,000
048 4855	6.35	2.31	No. 2	11.11	1,000
048 4856	4.76	2.92	No. 4	11.11	1,000
048 4857	6.35	2.92	No. 4	11.11	1,000
048 4858	7.94	2.92	No. 4	11.11	1,000
048 4859	6.35	3.56	No. 6	11.11	1,000
048 4860	7.94	3.56	No. 6	11.11	1,000
048 4861	9.53	3.56	No. 6	11.11	1,000
048 4862	12.70	3.56	No. 6	11.11	1,000
048 4863	6.35	4.34	No. 8	11.11	1,000
048 4864	7.94	4.34	No. 8	11.11	1,000
048 4865	9.53	4.34	No. 8	11.11	1,000
048 4866	12.70	4.34	No. 8	11.11	1,000
048 4867	7.94	4.93	No. 10	11.11	1,000
048 4868	9.53	4.93	No. 10	11.11	1,000
048 4869	12.70	4.93	No. 10	11.11	1,000
048 4870	12.70	5.56	No. 12	11.11	1,000
048 4871	12.70	6.53	¼	11.11	1,000
048 4875	4.76	2.31	No. 2	12.70	1,000
048 4876	6.35	2.31	No. 2	12.70	1,000
048 4877	4.76	2.92	No. 4	12.70	1,000
048 4878	6.35	2.92	No. 4	12.70	1,000
048 4879	7.94	2.92	No. 4	12.70	1,000
048 4880	6.35	3.56	No. 6	12.70	1,000
048 4881	7.94	3.56	No. 6	12.70	1,000
048 4882	9.53	3.56	No. 6	12.70	1,000
048 4883	12.70	3.56	No. 6	12.70	1,000
048 4884	6.35	4.34	No. 8	12.70	1,000
048 4885	7.94	4.34	No. 8	12.70	1,000
048 4886	9.53	4.34	No. 8	12.70	1,000
048 4887	12.70	4.34	No. 8	12.70	1,000
048 4888	7.94	4.93	No. 10	12.70	1,000
048 4889	9.53	4.93	No. 10	12.70	1,000
048 4890	12.70	4.93	No. 10	12.70	1,000
048 4891	12.70	5.56	No. 12	12.70	1,000
048 4892	12.70	6.53	¼	12.70	1,000
048 4896	4.76	2.31	No. 2	14.29	1,000
048 4897	6.35	2.31	No. 2	14.29	1,000
048 4898	4.76	2.92	No. 4	14.29	1,000
048 4899	6.35	2.92	No. 4	14.29	1,000
048 4900	7.94	2.92	No. 4	14.29	1,000
048 4901	6.35	3.56	No. 6	14.29	1,000
048 4902	7.94	3.56	No. 6	14.29	1,000
048 4903	9.53	3.56	No. 6	14.29	1,000
048 4904	12.70	3.56	No. 6	14.29	1,000
048 4905	6.35	4.34	No. 8	14.29	1,000
048 4906	7.94	4.34	No. 8	14.29	1,000
048 4907	9.53	4.34	No. 8	14.29	1,000
048 4908	12.70	4.34	No. 8	14.29	1,000
048 4909	7.94	4.93	No. 10	14.29	1,000
048 4910	9.53	4.93	No. 10	14.29	1,000
048 4911	12.70	4.93	No. 10	14.29	1,000
048 4912	12.70	5.56	No. 12	14.29	1,000
048 4913	12.70	6.53	¼	14.29	1,000

Material: Nylon 66
 Colour: Natural
 Flammability: UL94V-2

RoHS Directive
 2002/95/EC compliant

Tolerances:
 O/D = ± 0.25
 I/D = ± 0.13
 L = ± 0.38

Continued



PART NUMBER	O/D	I/D	Unified Screw Size	L Length	Unit Quantity
048 4917	4.76	2.31	No. 2	15.88	1,000
048 4918	6.35	2.31	No. 2	15.88	1,000
048 4919	4.76	2.92	No. 4	15.88	1,000
048 4920	6.35	2.92	No. 4	15.88	1,000
048 4921	7.94	2.92	No. 4	15.88	1,000
048 4922	6.35	3.56	No. 6	15.88	1,000
048 4923	7.94	3.56	No. 6	15.88	1,000
048 4924	9.53	3.56	No. 6	15.88	1,000
048 4925	12.70	3.56	No. 6	15.88	1,000
048 4926	6.35	4.34	No. 8	15.88	1,000
048 4927	7.94	4.34	No. 8	15.88	1,000
048 4928	9.53	4.34	No. 8	15.88	1,000
048 4929	12.70	4.34	No. 8	15.88	1,000
048 4930	7.94	4.93	No. 10	15.88	1,000
048 4931	9.53	4.93	No. 10	15.88	1,000
048 4932	12.70	4.93	No. 10	15.88	1,000
048 4933	12.70	5.56	No. 12	15.88	1,000
048 4934	12.70	6.53	¼	15.88	1,000
048 4938	4.76	2.31	No. 2	17.46	1,000
048 4939	6.35	2.31	No. 2	17.46	1,000
048 4940	4.76	2.92	No. 4	17.46	1,000
048 4941	6.35	2.92	No. 4	17.46	1,000
048 4942	7.94	2.92	No. 4	17.46	1,000
048 4943	6.35	3.56	No. 6	17.46	1,000
048 4944	7.94	3.56	No. 6	17.46	1,000
048 4945	9.53	3.56	No. 6	17.46	1,000
048 4946	12.70	3.56	No. 6	17.46	1,000
048 4947	6.35	4.34	No. 8	17.46	1,000
048 4948	7.94	4.34	No. 8	17.46	1,000
048 4949	9.53	4.34	No. 8	17.46	1,000
048 4950	12.70	4.34	No. 8	17.46	1,000
048 4951	7.94	4.93	No. 10	17.46	1,000
048 4952	9.53	4.93	No. 10	17.46	1,000
048 4953	12.70	4.93	No. 10	17.46	1,000
048 4954	12.70	5.56	No. 12	17.46	1,000
048 4955	12.70	6.53	¼	17.46	1,000
048 4959	4.76	2.31	No. 2	19.05	500
048 4960	6.35	2.31	No. 2	19.05	500
048 4961	4.76	2.92	No. 4	19.05	500
048 4962	6.35	2.92	No. 4	19.05	500
048 4963	7.94	2.92	No. 4	19.05	500
048 4964	6.35	3.56	No. 6	19.05	500
048 4965	7.94	3.56	No. 6	19.05	500
048 4966	9.53	3.56	No. 6	19.05	500
048 4967	12.70	3.56	No. 6	19.05	500
048 4968	6.35	4.34	No. 8	19.05	500
048 4969	7.94	4.34	No. 8	19.05	500
048 4970	9.53	4.34	No. 8	19.05	500
048 4971	12.70	4.34	No. 8	19.05	500
048 4972	7.94	4.93	No. 10	19.05	500
048 4973	9.53	4.93	No. 10	19.05	500
048 4974	12.70	4.93	No. 10	19.05	500
048 4975	12.70	5.56	No. 12	19.05	500
048 4976	12.70	6.53	¼	19.05	500
048 4980	4.76	2.31	No. 2	20.64	500
048 4981	6.35	2.31	No. 2	20.64	500
048 4982	4.76	2.92	No. 4	20.64	500
048 4983	6.35	2.92	No. 4	20.64	500
048 4984	7.94	2.92	No. 4	20.64	500
048 4985	6.35	3.56	No. 6	20.64	500
048 4986	7.94	3.56	No. 6	20.64	500
048 4987	9.53	3.56	No. 6	20.64	500
048 4988	12.70	3.56	No. 6	20.64	500
048 4989	6.35	4.34	No. 8	20.64	500
048 4990	7.94	4.34	No. 8	20.64	500
048 5000	9.53	4.34	No. 8	20.64	500
048 5001	12.70	4.34	No. 8	20.64	500
048 5002	7.94	4.93	No. 10	20.64	500
048 5003	9.53	4.93	No. 10	20.64	500
048 5004	12.70	4.93	No. 10	20.64	500
048 5005	12.70	5.56	No. 12	20.64	500
048 5006	12.70	6.53	¼	20.64	500

PART NUMBER	O/D	I/D	Unified Screw Size	L Length	Unit Quantity
048 5010	4.76	2.31	No. 2	22.22	1,000
048 5011	6.35	2.31	No. 2	22.22	1,000
048 5012	4.76	2.92	No. 4	22.22	1,000
048 5013	6.35	2.92	No. 4	22.22	1,000
048 5014	7.94	2.92	No. 4	22.22	1,000
048 5015	6.35	3.56	No. 6	22.22	1,000
048 5016	7.94	3.56	No. 6	22.22	1,000
048 5017	9.53	3.56	No. 6	22.22	1,000
048 5018	12.70	3.56	No. 6	22.22	1,000
048 5019	6.35	4.34	No. 8	22.22	1,000
048 5020	7.94	4.34	No. 8	22.22	1,000
048 5021	9.53	4.34	No. 8	22.22	1,000
048 5022	12.70	4.34	No. 8	22.22	1,000
048 5023	7.94	4.93	No. 10	22.22	1,000
048 5024	9.53	4.93	No. 10	22.22	1,000
048 5025	12.70	4.93	No. 10	22.22	1,000
048 5026	12.70	5.56	No. 12	22.22	1,000
048 5027	12.70	6.53	¼	22.22	1,000
048 5031	4.76	2.31	No. 2	23.81	500
048 5032	6.35	2.31	No. 2	23.81	500
048 5033	4.76	2.92	No. 4	23.81	500
048 5034	6.35	2.92	No. 4	23.81	500
048 5035	7.94	2.92	No. 4	23.81	500
048 5036	6.35	3.56	No. 6	23.81	500
048 5037	7.94	3.56	No. 6	23.81	500
048 5038	9.53	3.56	No. 6	23.81	500
048 5039	12.70	3.56	No. 6	23.81	500
048 5040	6.35	4.34	No. 8	23.81	500
048 5041	7.94	4.34	No. 8	23.81	500
048 5042	9.53	4.34	No. 8	23.81	500
048 5043	12.70	4.34	No. 8	23.81	500
048 5044	7.94	4.93	No. 10	23.81	500
048 5045	9.53	4.93	No. 10	23.81	500
048 5046	12.70	4.93	No. 10	23.81	500
048 5047	12.70	5.56	No. 12	23.81	500
048 5048	12.70	6.53	¼	23.81	500
048 5052	4.76	2.31	No. 2	25.40	500
048 5053	6.35	2.31	No. 2	25.40	500
048 5054	4.76	2.92	No. 4	25.40	500
048 5055	6.35	2.92	No. 4	25.40	500
048 5056	7.94	2.92	No. 4	25.40	500
048 5057	6.35	3.56	No. 6	25.40	500
048 5058	7.94	3.56	No. 6	25.40	500
048 5059	9.53	3.56	No. 6	25.40	500
048 5060	12.70	3.56	No. 6	25.40	500
048 5061	6.35	4.34	No. 8	25.40	500
048 5062	7.94	4.34	No. 8	25.40	500
048 5063	9.53	4.34	No. 8	25.40	500
048 5064	12.70	4.34	No. 8	25.40	500
048 5065	7.94	4.93	No. 10	25.40	500
048 5066	9.53	4.93	No. 10	25.40	500
048 5067	12.70	4.93	No. 10	25.40	500
048 5068	12.70	5.56	No. 12	25.40	500
048 5069	12.70	6.53	¼	25.40	500

Material: Nylon 66
 Colour: Natural
 Flammability: UL94V-2

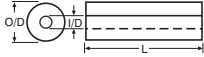
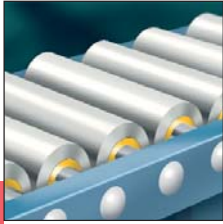
RoHS Directive
 2002/95/EC compliant



Tolerances:
 O/D = ± 0.25
 I/D = ± 0.13
 L = ± 0.38

- Ideal for use in electrical assemblies for numerous applications
- Can also be used as bushings, bearings, rollers and glides
- Smaller sizes are ideal as LED supports

Special Round Plain Spacers



PART NUMBER	O/D	I/D	L Length	Unit Quantity
049 5120	7.52	3.18	2.38	1,000
049 5121	9.53	5.16	2.78	1,000
049 5126	15.88	4.75	3.18	1,000
049 5128	9.53	5.54	3.18	1,000
049 5129	9.88	6.38	3.18	1,000
049 5141	5.49	3.18	3.43	1,000
049 5142	4.75	1.70	3.56	1,000
049 5144	6.35	4.88	3.68	1,000
049 5148	4.75	2.92	3.96	1,000
049 5149	5.54	3.56	3.96	1,000
049 5151	6.38	3.86	3.96	1,000
049 5153	12.70	9.78	3.96	1,000
049 5155	6.35	3.56	4.06	1,000
049 5157	5.08	3.68	4.34	1,000
049 5160	12.29	8.71	4.75	1,000
049 5161	15.75	8.89	4.75	1,000
049 5166	4.88	2.36	5.16	1,000
049 5167	9.53	4.34	5.16	1,000
049 5168	8.03	4.78	5.16	1,000
049 5169	19.05	9.78	5.16	1,000
049 5173	6.35	3.56	5.33	1,000
049 5175	7.93	4.75	5.46	1,000
049 5178	6.35	2.92	5.54	1,000
049 5179	15.88	6.86	5.54	1,000
049 5183	9.53	6.35	5.59	1,000
049 5186	9.98	4.29	5.94	1,000
049 5187	12.70	6.53	5.94	1,000
049 5191	4.90	3.18	6.35	1,000
049 5193	9.53	5.56	6.35	1,000
049 5194	19.05	6.35	6.35	1,000
049 5195	9.53	6.53	6.35	1,000
049 5196	10.31	6.53	6.35	1,000
049 5201	15.88	6.60	6.35	1,000
049 5203	12.70	7.11	6.35	1,000
049 5205	25.40	9.53	6.35	500
049 5208	15.88	11.10	6.35	500
049 5209	19.69	13.08	6.35	500
049 5211	25.40	19.18	5.16	500
049 5213	9.53	5.16	6.73	500
049 5215	18.24	13.36	7.14	500
049 5216	44.45	23.57	7.14	500
049 5217	7.11	3.18	7.52	500
049 5221	5.46	3.68	8.33	500
049 5223	11.94	3.05	9.12	500
049 5224	16.71	7.11	9.12	500

PART NUMBER	O/D	I/D	L Length	Unit Quantity
049 5228	15.88	6.35	9.53	500
049 5229	19.05	6.35	9.53	500
049 5231	9.53	6.60	9.53	500
049 5232	25.00	9.30	9.53	500
049 5233	14.22	9.63	9.53	500
049 5234	19.05	12.45	9.53	500
049 5235	25.40	12.70	9.53	500
049 5238	19.05	7.93	9.91	500
049 5239	4.06	2.54	10.31	500
049 5240	7.87	3.20	10.41	500
049 5245	11.43	8.26	10.72	500
049 5246	12.70	9.65	10.72	500
049 5248	7.93	5.56	11.10	500
049 5249	12.70	9.53	11.10	500
049 5253	9.53	6.50	12.70	500
049 5254	10.31	6.53	12.70	500
049 5255	15.88	7.14	12.70	500
049 5256	14.27	9.53	12.70	500
049 5258	15.88	12.70	12.70	500
049 5261	20.57	13.21	12.70	500
049 5266	11.68	6.35	14.27	500
049 5268	6.35	5.08	15.06	500
049 5269	15.88	9.80	15.47	500
049 5270	20.63	5.16	15.88	500
049 5271	15.39	5.16	15.88	500
049 5272	12.70	9.53	15.88	500
049 5273	12.70	9.53	17.45	500
049 5275	10.31	6.53	19.05	500
049 5280	9.53	6.53	19.05	500
049 5283	33.20	27.13	19.05	200
049 5287	12.70	7.14	20.62	200
049 5288	15.88	7.14	20.62	200
049 5289	15.75	12.80	20.62	200
049 5290	10.16	3.56	18.25	200
049 5291	9.53	6.53	22.22	200
049 5292	15.88	10.80	22.22	200
049 5296	9.53	6.53	25.40	200
049 5297	10.31	6.53	25.40	200
049 5298	12.70	8.33	25.40	200
049 5299	12.70	9.78	25.40	200
049 5301	6.35	2.92	33.32	200
049 5302	12.70	6.35	34.93	200
049 5303	15.88	6.50	38.10	200
049 5304	12.70	6.53	41.28	200

Material: Nylon 66
 Colour: Natural
 Flammability: UL94V-2

- Ideal for use in electrical assemblies for numerous applications
- Can also be used as bushings, bearings, rollers and glides
- Smaller sizes are ideal as LED supports

RoHS Directive
 2002/95/EC compliant



Tolerances:
 O/D = ± 0.25
 I/D = ± 0.13
 L = ± 0.38

P.C.B Card Guides



PART NUMBER	Description	A	B	Unit Quantity
202 0001	2.1/2" Guide	63.5	50.8	100
202 0002	3" Guide	76.2	63.5	100
202 0003	3.1/2" Guide	88.9	76.2	100
202 0004	4" Guide	101.6	88.9	100
202 0005	4.1/2" Guide	114.3	101.6	100
202 0006	5" Guide	127.0	114.3	100
202 0007	5.1/2" Guide	139.7	127.0	100
202 0008	6" Guide	152.4	139.7	100

Material: Nylon 66
Colour: Natural

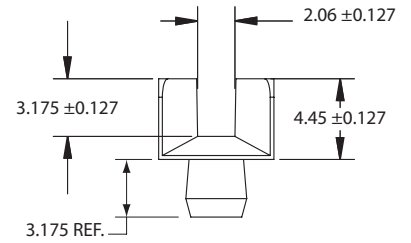
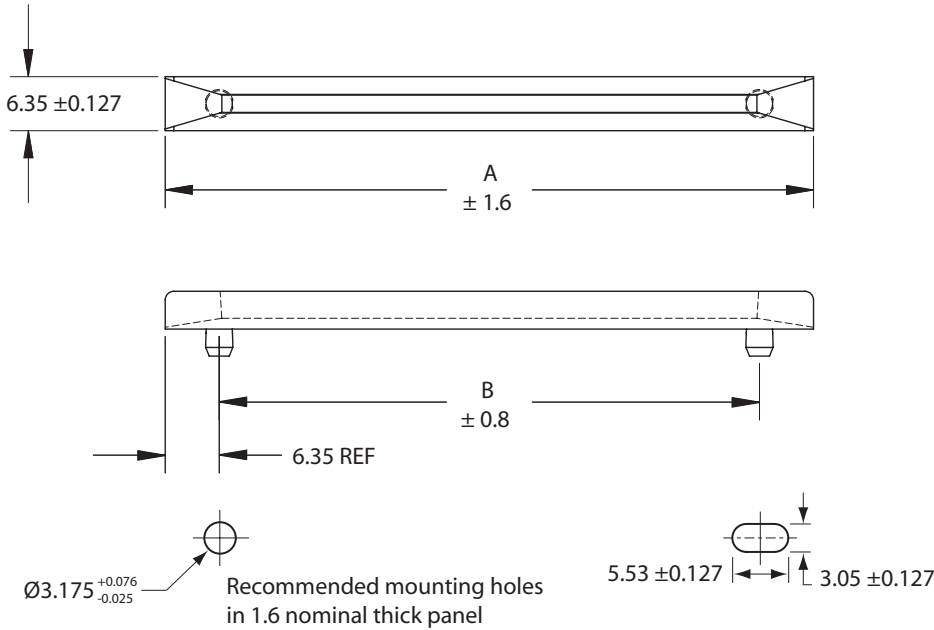
Flammability: UL94V-2

RoHS Directive 2002/95/EC compliant

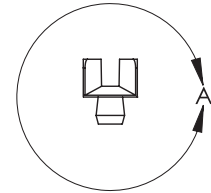


- Fast and economical solution for mounting PC Boards
- Card insertion is simple and fast
- Smooth positive channel firmly supports and protects the board
- Designed to snap into pre-punched holes in the chassis

2
PCB Accessories



DETAIL A
SCALE 4 : 1



L.E.D Spacers LH-5 Series

PART NUMBER	L	Unit Quantity
148 0001	1.0	1,000
148 0003	2.0	1,000
148 0005	3.0	1,000
148 0007	4.0	1,000
148 0009	5.0	1,000
148 0011	6.0	1,000
148 0013	7.0	1,000
148 0015	8.0	1,000
148 0017	9.0	1,000
148 0019	10.0	1,000

Material: Olefin Elastomer UL94V-0
Colour: Black

RoHS Directive 2002/95/EC compliant



- For Ø5mm LEDs
- Either the exterior channels (as shown in Fig. 1) or the central ellipse (as shown in Fig. 2) of a spacer can be used

Lengths other than those displayed are available.
Please contact our Sales Department for further information.

