

Tapered Plugs - For Internal Thread Bores

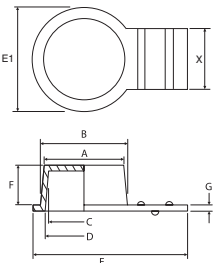
PART NUMBER	Thread Size	Body Diameter		Head Diameter D	Body Length h	Suits Additional Threads	Unit Quantity
		d2	d1				
134 2120	M7	6.1	4.4	10.0	10.0	-	500
134 2123	M9	7.7	6.0	11.0	10.0	-	500
134 2125	M10 x .75	9.3	7.6	13.0	10.0	-	500
134 2127	M11 x 1.00	10.1	8.4	14.0	10.0	1/8" B.S.P.	500
134 2130	M12 x 1.25	10.9	9.2	14.0	10.0	-	500
134 2132	-	11.6	9.9	15.0	10.0	-	500
134 2135	M14	12.3	10.6	16.0	10.0	Pg 7	500
134 2136	M14 x 1.00	13.0	11.2	17.0	10.0	1/4" B.S.P.	500
134 2138	M15 x 1.00	14.1	12.0	18.0	12.0	-	500
134 2140	M16 x 1.50	14.6	12.5	18.0	12.0	Pg 9	500
134 2143	3/8" B.S.P.	15.5	13.4	19.0	12.0	-	500
134 2145	M17 x 1.00	16.1	14.0	19.0	12.0	3/8" B.S.P.	500
134 2147	M18 x 1.00	17.0	14.7	21.0	13.0	-	500
134 2150	M20	18.6	16.3	22.0	13.0	-	500
134 2152	M22	19.5	17.0	22.0	13.0	Pg 11	500
134 2153	M22 x 2.00	20.0	17.5	24.0	15.0	1/2" B.S.P.	500
134 2155	M24	21.0	18.5	25.0	15.0	Pg 13.5	500
134 2156	3/4" B.S.P.	21.5	19.0	25.0	15.0	-	500
134 2157	M24 x .75	23.3	20.5	27.0	16.0	Pg 16	500
134 2158	M25 x 1.50	23.5	20.7	28.0	16.0	-	500
134 2160	-	24.8	22.0	29.0	16.0	-	500
134 2165	M30	26.4	23.1	30.0	18.0	3/4" B.S.P.	100
134 2167	-	27.7	24.4	32.0	19.0	-	100
134 2168	M33	29.2	26.4	33.0	19.0	Pg 21	100
134 2170	M33 x 2.00	31.2	27.7	35.0	19.0	-	100
134 2172	M34 x 1.50	32.6	29.8	37.0	16.0	1" B.S.P.	100
134 2175	-	35.0	31.3	38.0	21.0	-	100
134 2180	M39 x 2.00	37.1	33.3	41.0	22.0	Pg 29	100
134 2181	M45	40.5	36.7	45.0	22.0	M42 x 1.50	100
134 2182	-	42.5	39.0	48.0	23.0	-	100
134 2185	M48	42.9	39.6	48.0	19.0	-	100
134 2190	-	44.7	41.4	49.0	19.0	-	100
134 2192	M50 x 3.00	46.9	44.3	51.0	19.0	Pg 36	100

Material: Low Density Polyethylene  
Colour: Yellow  
RoHS Directive 2002/95/EC compliant



If using in non-threaded holes - hole diameter should be 0.20 - 0.30 less than listed body diameter 'd2'

- Protects holes and prevents the ingress of unwanted debris
- Moulded in yellow for easy identification



Taper Plugs With Tab

PART NUMBER	A	B	C	D	E	E1	F	G	X	Unit Quantity
134 6000	8.0	9.7	6.6	7.9	19.5	12.7	9.1	0.8	7.8	1,000
134 6002	8.3	9.6	6.7	8.0	22.9	12.7	9.2	0.8	7.9	1,000
134 6004	9.2	10.1	7.7	9.0	19.9	13.5	9.8	0.9	7.7	1,000
134 6006	9.7	11.0	8.2	9.5	19.8	13.8	9.9	1.0	7.8	1,000
134 6008	10.6	12.1	9.0	10.6	22.7	16.1	9.4	0.9	9.7	1,000
134 6010	12.1	13.5	10.7	12.1	25.5	17.7	11.1	0.9	9.8	1,000
134 6012	14.3	15.9	12.7	14.5	27.2	18.8	13.0	0.8	9.7	750
134 6014	15.1	17.0	13.9	15.2	27.5	20.3	13.0	1.0	7.5	750
134 6016	16.9	18.6	15.0	17.1	31.1	22.9	14.1	0.8	10.0	1,000
134 6018	17.2	19.0	15.9	17.7	31.0	23.0	14.0	0.8	9.8	750

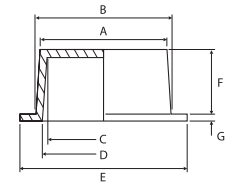
Material: Low Density Polyethylene  
Colour: Yellow  
RoHS Directive 2002/95/EC compliant



- Pull tab makes the plug easy to remove after use
- Ideal for hoses and flexible tubes

## Tapered Plugs

PART NUMBER	A	B	C	D	E	F	G	Unit Quantity
134 4005	4.8	5.5	3.2	4.0	8.0	5.7	0.8	1,000
134 4006	3.2	4.8	1.2	2.9	10.0	8.0	0.8	1,000
134 4007	5.0	5.9	3.6	4.6	7.4	8.0	0.9	1,000
134 4008	5.5	6.2	4.0	4.8	8.9	5.9	0.7	1,000
134 4009	6.0	6.7	4.5	5.3	10.6	5.9	0.8	1,000
134 4010	6.4	7.4	4.9	5.9	11.5	7.0	0.8	1,000
134 4011	7.6	8.5	6.0	7.1	12.0	8.0	0.8	1,000
134 4012	8.2	9.2	6.6	7.8	13.0	9.2	0.8	1,000
134 4013	9.2	10.6	7.2	9.0	13.9	10.0	0.9	1,000
134 4014	9.8	11.0	7.7	9.4	15.0	9.9	0.8	1,000
134 4015	10.8	12.3	9.0	10.6	16.0	9.6	0.8	1,000
134 4016	11.4	12.7	9.9	11.3	16.9	10.0	0.8	1,000
134 4017	12.0	13.8	10.4	12.1	17.9	11.1	0.8	1,000
134 4018	13.1	14.5	11.2	12.6	19.0	11.1	0.9	1,000
134 4019	13.9	15.4	12.2	14.0	19.1	12.3	0.8	1,000
134 4020	14.2	15.7	12.7	14.7	18.9	12.8	0.8	1,000
134 4021	15.2	16.9	13.9	15.7	20.4	13.1	0.8	1,000
134 4022	16.3	18.0	14.4	16.3	20.1	13.4	0.8	1,000
134 4023	17.2	19.0	15.8	17.5	23.1	14.1	0.7	500
134 4024	18.3	19.9	16.3	19.0	23.9	14.1	0.7	500
134 4026	19.3	21.1	17.6	19.8	24.7	14.6	0.8	500
134 4027	19.6	21.0	17.1	18.2	26.7	8.9	1.0	500
134 4029	20.4	22.2	18.9	20.9	25.5	15.0	0.8	500
134 4031	21.1	22.8	19.8	21.9	27.5	15.0	0.8	500
134 4032	21.9	25.1	20.2	23.3	28.4	15.5	0.8	500
134 4033	24.5	25.7	22.5	23.6	29.4	13.8	0.7	500
134 4034	25.2	26.8	23.7	25.7	30.7	14.0	0.7	500
134 4035	27.2	28.4	25.3	26.9	34.6	13.7	1.0	250
134 4036	24.9	27.9	23.0	26.0	36.1	16.6	2.3	250
134 4038	27.9	30.3	26.0	28.8	34.4	13.9	0.9	250
134 4039	29.7	31.6	27.9	30.3	35.8	16.8	0.7	250
134 4040	30.6	32.6	29.0	31.0	36.0	16.5	0.8	250
134 4041	30.9	32.7	29.5	31.9	35.5	17.8	0.8	250
134 4042	31.6	33.7	30.0	32.2	37.3	16.4	0.8	250
134 4043	33.1	34.9	31.7	33.9	39.5	16.8	0.7	250
134 4044	34.7	37.4	33.0	36.2	41.8	17.6	0.8	250
134 4045	35.7	38.1	34.0	37.1	41.1	16.8	0.8	250
134 4046	36.8	39.5	35.3	38.0	45.7	16.8	0.8	250
134 4047	37.7	40.0	36.4	38.9	44.6	17.4	1.0	250
134 4048	39.3	41.9	37.9	40.9	46.8	19.7	0.8	250
134 4049	41.4	43.8	40.0	42.4	47.8	17.9	0.9	250



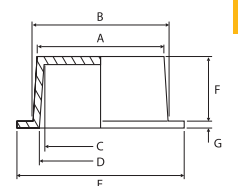
Material: Low Density Polyethylene  
 Colour: Red  
 RoHS Directive 2002/95/EC compliant



- Can be used as a cap or a plug for internal or external protection
- Ideal for connection ports, inspection holes, metal and plastic piping etc.
- Other sizes available, please contact our Sales Department for further information

## Taper Plugs With Large Flange

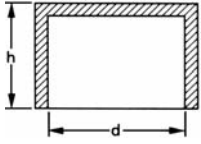
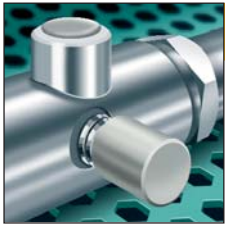
PART NUMBER	A	B	C	D	E	F	G	Unit Quantity
134 5000	5.4	6.7	3.3	4.6	22.0	15.0	1.3	1,000
134 5002	8.1	9.3	6.6	7.8	18.0	9.0	0.8	1,000
134 5004	11.4	12.8	9.7	11.3	22.0	10.0	0.8	1,000
134 5006	12.2	13.8	10.7	12.3	24.0	11.0	0.8	1,000
134 5008	14.4	16.1	12.7	14.7	26.0	12.0	0.8	1,000
134 5010	17.0	19.0	15.0	17.5	29.0	14.0	0.8	1,000
134 5012	17.8	20.2	16.3	19.0	30.0	14.0	0.8	500
134 5014	20.4	22.4	18.9	20.9	33.0	15.0	0.8	500
134 5016	24.0	25.7	22.5	24.2	37.0	14.0	0.8	500
134 5018	25.2	27.2	23.7	25.7	40.0	14.0	0.8	500
134 5020	29.6	31.4	27.9	30.3	44.7	16.0	1.4	250
134 5022	31.0	33.4	29.5	31.9	48.0	17.0	0.8	250



Material: Low Density Polyethylene  
 Colour: Red  
 RoHS Directive 2002/95/EC compliant



- Provides a closure where a large flange is required



## Protection Caps - For External Threads & Plain Diameters

PART NUMBER	Thread Size	d Inside Diameter	h Length	Unit Quantity
*135 2220	M6	5.7	12.0	1,000
*135 2225	M8	7.8	14.0	1,000
135 2228	M10	9.8	11.0	500
135 2230	-	10.2	8.0	500
135 2232	-	10.5	8.0	500
135 2234	M12	11.5	12.0	500
135 2240	½" B.S.P.	12.7	13.5	500
135 2241	M14	13.5	13.5	500
135 2244	M16	15.7	15.0	500
135 2246	¾" B.S.P.	15.9	14.0	500
135 2250	M18	17.7	15.0	500
135 2251	-	19.3	15.0	500
135 2253	M20	19.7	14.0	500
135 2256	½" B.S.P.	20.6	15.0	500
135 2260	M22	21.3	15.5	500
135 2261	M24	23.5	18.5	100
135 2263	M26	25.4	17.5	100
135 2268	¾" B.S.P.	26.2	18.5	100
135 2270	M30	29.3	18.0	100
135 2272	1" B.S.P.	33.4	22.5	100

PART NUMBER	Thread Size	d Inside Diameter	h Length	Unit Quantity
135 2273	1" B.S.P.	33.4	45.0	1,000
135 2275	1" B.S.P.	34.8	25.0	1,000
135 2280	1" B.S.P.	35.7	14.0	1,000
135 2282	1" B.S.P.	37.5	20.0	1,000
135 2290	1¼" B.S.P.	41.9	28.0	500
135 2292	1½" B.S.P.	47.8	29.5	500
135 2294	1½" B.S.P.	50.6	29.0	500
135 2296	1½" B.S.P.	51.6	16.0	500
135 2297	1¾" B.S.P.	52.5	30.0	500
135 2299	1¾" B.S.P.	56.7	19.0	500
135 2302	2" B.S.P.	59.7	30.0	100
135 2304	2" B.S.P.	59.7	with hole	100
135 2306	2" B.S.P.	69.8	25.0	100
135 2310	2½" B.S.P.	75.5	35.0	100
135 2312	2½" B.S.P.	75.8	18.0	100
135 2315	2½" B.S.P.	79.8	25.0	100
135 2317	2½" B.S.P.	88.4	36.0	100
135 2320	2½" B.S.P.	88.8	24.0	100
135 2325	2½" B.S.P.	101.8	24.0	100

If using on a plain diameter the outside dimensions should be 0.20 - 0.30 larger than listed inside diameter 'd'

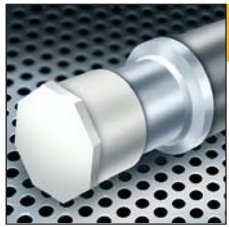
Material: Low Density Polyethylene  
Colour: Natural

\* Radiused Top Form

RoHS Directive 2002/95/EC compliant



- Protects plain or threaded shafts
- Masks sharp edges



## Caps with Gripping Edge

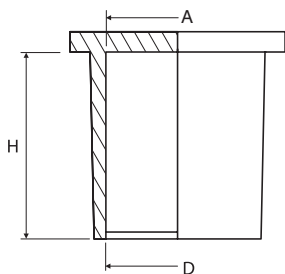
PART NUMBER	A	D	H	Unit Quantity
135 8000	6.6	7.5	9.9	1,000
135 8001	7.8	8.3	18.4	1,000
135 8002	7.9	8.0	12.0	1,000
135 8003	7.9	8.3	18.3	1,000
135 8004	8.0	9.0	16.0	1,000
135 8005	9.4	10.0	21.5	1,000
135 8006	9.8	10.6	21.8	1,000
135 8007	11.8	12.3	16.0	1,000
135 8008	14.6	15.5	15.9	1,000
135 8009	18.5	20.0	20.0	1,000

Material : Low Density Polyethylene  
Colour: Natural

RoHS Directive 2002/95/EC compliant



- Gripping edge makes the cap easy to pull off
- Ideal for brake and fuel lines
- Meets the requirements of SAE J2044



## Protection Plugs For Internal Threads And Bores



PART NUMBER	Thread Size	Body Diameter d	Head Diameter D	Body Length h	Suits Additional Threads	Unit Quantity
133 2050	M10	9.1	12.9	6.5	1/8" B.S.P	500
133 2060	M14	12.1	15.9	7.0	1/4" B.S.P	500
133 2070	M18	16.0	19.6	7.7	3/8" B.S.P	500
133 2075	M22	19.6	23.3	8.3	Pg13.5 1/2" B.S.P	500
133 2077	-	22.3	25.0	11.7	-	500
133 2080	M27	25.1	28.8	8.5	3/4" B.S.P	100
133 2085	M36	31.8	35.8	8.5	M33 x 1.5 M33 x 2.0	100
133 2088	M45	40.5	47.0	9.0	M42 x 1.5 1 1/4" B.S.P	100
133 2090	M48	46.0	51.0	9.0	Pg 36 1 1/2" B.S.P	100
133 2095	M64	58.0	66.0	8.0	Pg 48	100
133 2097	M75	72.5	83.0	13.0	M76 x 4 2 1/2" B.S.P	100
133 2098	4" B.S.P	111.5	127.5	19.0	-	100
133 2099	-	120.0	126.0	15.0	-	100

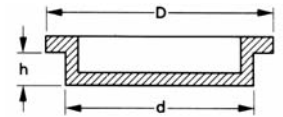
Material: Low Density Polyethylene  
Colour: Natural

If using in non-threaded holes - the hole diameter should be 0.20 - 0.80 less than body diameter 'd'

RoHS Directive 2002/95/EC compliant



- Protects tapped or plain holes and prevents the ingress of unwanted debris
- Quick and easy to install



## Lamination Caps

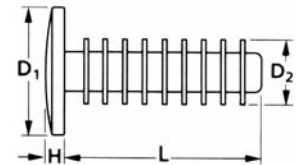


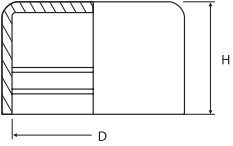
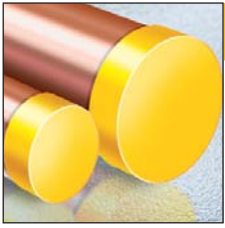
PART NUMBER	No. of Laminates	Thread Size and Depth	D1 Head Diameter	D2 Body Diameter	H Head Height	L Body Height	Unit Quantity
713 2710	3	M8 x 10	20.0	8.0	3.0	10.0	1,000
713 2720	9	M8 x 30	20.0	8.0	3.0	28.5	1,000
713 2730	6	M10 x 30	20.0	10.0	3.0	28.5	1,000
713 2740	6	M12 x 30	20.0	12.0	3.0	29.0	1,000

Material: Low Density Polyethylene  
Colour: Natural  
RoHS Directive 2002/95/EC compliant



- Ideal for blanking counter-bored holes in chipboard etc
- Domed head gives neat finish





Pipe Caps

PART NUMBER	*D	H	Dimensions DIN Norm	Bore size reference of pipe onto which cap will fit	Unit Quantity
135 1000	5.0	15.0			1,000
135 1001	5.6	15.0			1,000
135 1002	6.0	15.0			1,000
135 1003	6.3	15.0			1,000
135 1004	8.0	17.0			1,000
135 1005	9.6	17.0		1/8"	1,000
135 1006	10.0	18.0			1,000
135 1007	11.0	15.0			1,000
135 1008	12.0	18.0			1,000
135 1009	12.7	18.0		1/4"	1,000
135 1010	14.0	13.0			1,000
135 1011	15.0	20.0			1,000
135 1012	16.0	20.0			500
135 1013	17.2	20.0		3/8"	500
135 1014	18.0	20.0			500
135 1015	19.0	20.0			500
135 1016	20.0	20.0			500
135 1017	20.9	20.0			500
135 1018	21.3	21.0	15	1/2"	500
135 1019	22.0	25.0			500
135 1020	23.0	24.0			250
135 1021	24.0	26.0			250
135 1022	25.0	25.0			250
135 1023	26.0	26.0			250
135 1024	27.0	26.0	20	3/4"	250
135 1025	28.0	26.0			250
135 1026	30.0	29.0			250
135 1027	30.5	29.0			250
135 1028	32.0	29.0			250
135 1029	33.0	28.0	25	1"	250

Material: Low Density Polyethylene  
Colour: Yellow  
RoHS Directive 2002/95/EC compliant



\* Dimension "D" is not the size of the plug itself, but the nominal size of the pipe for which it is suitable.

Other sizes available, please contact our Sales Department for further information.

- Developed especially for steel pipes in ISO standard dimensions

Grease Nipple Caps

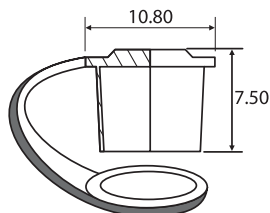


PART NUMBER	To suit	Colour	Unit Quantity
135 6002	1/8 BSP	Yellow	1,000
135 6003	1/8 BSP	Red	1,000

Material : Low Density Polyethylene

- Prevents the ingress of dirt and grit

RoHS Directive 2002/95/EC compliant

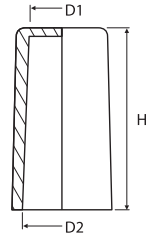


## Flex Caps

PART NUMBER	D1	D2	H	Unit Quantity
135 5010	7.0	9.3	21.0	1,000
135 5020	8.3	11.8	23.0	1,000

Material: Low Density Polyethylene  
 Colour: Yellow  
 RoHS Directive 2002/95/EC compliant

- Unique protection cap giving a dust-tight seal on small metal tubes
- Easy to fit and remove, but not easily dislodged when tubes are bundled



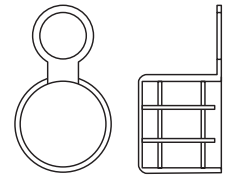
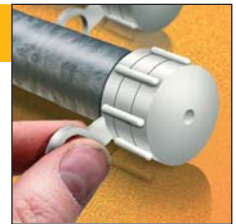
## Protection Caps With Pull-Off Tabs

PART NUMBER	Diameter	Height	To suit thread sizes:		Pipe Size DIN2448/2458	Unit Quantity
			DIN13	DIN259		
135 4000	9.8	11.25	M 10	R 1/8	13/32"	1,000
135 4001	13.10	13.50		R 1/4		1,000
135 4002	11.5	12.0	M 12		15/32"	1,000
135 4003	13.5	13.5	M 14		17/32"	1,000
135 4004	15.70	15.00	M 16		5/8"	1,000
135 4005	16.80	14.80		R 3/8	11/16"	1,000
135 4006	17.65	14.50	M 18		23/32"	1,000
135 4007	21.10	15.00		R 1/2	25/32"	500
135 4008	21.30	15.50	M 22	R 5/8	7/8"	500
135 4009	26.30	18.50		R 3/4	11/16"	500
135 4010	33.40	22.50		R 1	1.11/32"	500

Material: Low Density Polyethylene  
 Colour: Natural  
 RoHS Directive 2002/95/EC compliant

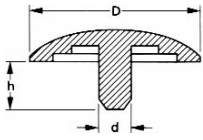


- Unique design with integral pull-off tab to aid removal
- Ideal for protecting external threads and tubes

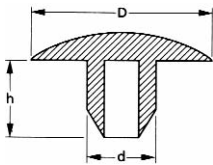


See chapter 14 for more hole blanking solutions

## Cover Plugs For Internal Threads



Form A



Form B

PART NUMBER	Colour	Thread Size	d Body Diameter	D Head Diameter	h Body Length	Form	Unit Quantity
131 1510	Black	M3	2.5	12.0	4.7	A	1,000
131 1511	White	M3	2.5	12.0	4.7	A	1,000
131 1512	Light Brown	M3	2.5	12.0	4.7	A	1,000
131 1530	Black	M3.5	3.2	12.0	6.0	A	1,000
131 1531	White	M3.5	3.2	12.0	6.0	A	1,000
131 1540	Black	M3.5	3.2	15.0	6.0	A	1,000
131 1541	White	M3.5	3.2	15.0	6.0	A	1,000
132 1750	Black	M5	4.4	9.0	5.5	B	1,000
132 1751	White	M5	4.4	9.0	5.5	B	1,000
132 1760	Black	M5 x 0.5	4.7	7.0	5.0	B	1,000
132 1761	White	M5 x 0.5	4.7	7.0	5.0	B	1,000
132 1765	Black	M6	5.4	12.0	7.5	B	1,000
132 1766	White	M6	5.4	12.0	7.5	B	1,000
132 1770	Black	M6	5.4	15.0	7.5	B	1,000
132 1771	White	M6	5.4	15.0	7.5	B	1,000
132 1780	Black	M7	6.0	11.0	7.0	B	1,000
132 1781	White	M7	6.0	11.0	7.0	B	1,000
132 1785	Black	M7	6.0	12.0	7.0	B	1,000
132 1786	White	M7	6.0	12.0	7.0	B	1,000
132 1790	Black	M7	6.0	15.0	7.0	B	1,000
132 1791	White	M7	6.0	15.0	7.0	B	1,000
132 1795	Black	M8	7.0	11.0	6.5	B	1,000
132 1796	White	M8	7.0	11.0	6.5	B	1,000
132 1800	Black	M8	7.0	12.0	6.5	B	1,000
132 1801	White	M8	7.0	12.0	6.5	B	1,000
132 1805	Black	M8	7.0	15.0	6.5	B	1,000
132 1806	White	M8	7.0	15.0	6.5	B	1,000
132 1810	Black	M9	8.0	12.0	7.0	B	500
132 1811	White	M9	8.0	12.0	7.0	B	500
132 1820	Black	M9	8.0	15.0	7.0	B	500
132 1821	White	M9	8.0	15.0	7.0	B	500
132 1825	Black	M10	8.5	12.0	8.0	B	500
132 1826	White	M10	8.5	12.0	8.0	B	500
132 1830	Black	M10	8.5	15.0	8.0	B	500
132 1831	White	M10	8.5	15.0	8.0	B	500
132 1835	Black	M11	10.0	12.0	9.0	B	500
132 1836	White	M11	10.0	12.0	9.0	B	500
132 1840	Black	M11	10.0	15.0	9.0	B	500
132 1841	White	M11	10.0	15.0	9.0	B	500
132 1845	Black	M11	10.0	12.0	4.0	B	500
132 1846	White	M11	10.0	12.0	4.0	B	500
132 1860	Black	M14	11.9	18.0	8.0	B	500
132 1861	White	M14	11.9	18.0	8.0	B	500
132 1870	Black	M16	15.4	19.0	8.5	B	500
132 1871	White	M16	15.4	19.0	8.5	B	500

Material: Low Density Polyethylene

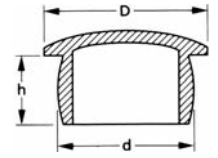
If using in non-threaded holes - hole size should be about 0.20 less than listed body diameter 'd'

RoHS Directive 2002/95/EC compliant



- Protects tapped or plain holes and prevents the ingress of unwanted debris
- Quick and easy to install
- Domed head gives a neat appearance

## Cover Plugs For Internal Threads



PART NUMBER	Thread Size	Body Diameter d	Head Diameter D	Body Length h	Suits Additional Threads	Unit Quantity
130 1010	M2.5	2.0	3.5	7.0		1,000
130 1015	M3.5	3.2	12.0	6.0		1,000
*130 1030	M5	4.2	9.0	4.45		1,000
130 1031	M5	4.4	9.0	5.5		1,000
130 1032	M5 x .5	4.7	7.0	5.0		1,000
130 1040	M6	5.2	11.0	6.0		1,000
130 1041	M6	5.4	12.0	7.5		1,000
130 1042	M7	6.0	11.0	7.0		1,000
130 1044		6.6	7.5	5.0		1,000
130 1050	M8	7.0	11.0	6.5		1,000
130 1051	M8	7.3	11.0	6.0		1,000
130 1052	M8 x .75	7.5	11.0	4.5		1,000
130 1060	M9	8.0	12.0	7.0		1,000
130 1061	M10	8.5	12.0	8.0		1,000
130 1062	M10	8.8	11.5	8.0	½" B.S.P.	1,000
130 1063	M10 x .75	9.3	12.5	9.0	½" B.S.P.	1,000
130 1065	M11	10.0	15.0	9.0		500
130 1066	M11	10.0	12.0	4.0		500
130 1070	M12	10.7	15.0	9.0		500
130 1075	M14	11.9	14.1	8.0	Pg 7 & ¼" B.S.P.	500
130 1076	M14	11.9	23.0	8.0	Pg 7 & ¼" B.S.P.	500
130 1077	M14	12.6	17.5	9.0		500
130 1078	M14 x 1.0	13.2	17.5	8.0		500
130 1079	M14 x .5	13.8	19.0	8.5		500
130 1080	M16	14.8	18.5	9.5		500
130 1081	M18	15.4	19.0	8.5	¾" B.S.P.	500
130 1082	M18	16.0	19.0	8.5	¾" B.S.P.	500
130 1083	M18 x 1.5	16.8	20.0	9.0		500
130 1084	M18 x .75	17.2	23.0	9.5		500
130 1086	M20 x 2.0	18.8	21.5	9.0		500
130 1090	M22	19.6	26.0	9.0	Pg 13.5 & ½" B.S.P.	500
130 1091	M22	19.6	29.0	9.0	Pg 13.5 & ½" B.S.P.	500
130 1092	M22	20.5	25.5	9.0		500
130 1100	M24	20.1	26.0	13.0	¾" B.S.P.	100
130 1102	M24 x 2.0	22.6	29.0	9.0		100
130 1103	M24 x 1.0	23.0	27.3	19.3		100
130 1110	M27	24.0	27.0	12.5		100
130 1111	M27	25.0	32.0	13.0	¾" B.S.P.	100
130 1112	M27	25.0	36.0	13.0	¾" B.S.P.	100
130 1115	M28 x 2.0	26.0	31.5	12.0		100
130 1120	M30	27.1	29.6	15.0	Pg 21	100
130 1121	M30 x 1.5	29.0	34.5	15.0	⅞" B.S.P.	100
130 1130	M33	31.2	38.0	13.0	1" B.S.P.	100
130 1131	M33	31.2	45.0	13.0	1" B.S.P.	100
130 1135	M35 x 1.5	33.5	41.0	11.5		100
130 1140	M36 x 2.0	34.0	40.0	20.0		100
130 1145	M39	35.6	47.0	15.0	Pg 29	100
130 1147	M38 x 1.5	36.5	47.0	18.0	1½" B.S.P.	100
130 1150	M42 x 3.0	39.7	46.0	15.0	1¼" B.S.P.	100
130 1151	M42 x 3.0	39.7	51.0	15.0	1¼" B.S.P.	100
130 1152	M42 x 3.0	39.7	42.0	15.0	1¼" B.S.P.	100
130 1160	M45 x 3.0	42.0	44.5	12.8		50
130 1165	M48	43.3	50.5	15.0		50
130 1166	M48 x 3.0	45.5	51.0	16.0		50
130 1170	PG 36	45.8	51.0	16.0	1½" B.S.P.	50
130 1171	PG 36	45.8	58.0	16.0	1½" B.S.P.	50
130 1180	M56	50.5	57.0	15.5		50
130 1185	M55 x 3.0	52.3	60.0	16.0		50
130 1190	M60	55.3	59.5	19.5		50
130 1191	M60	55.5	60.0	16.0		50
130 1192	M60 x 2.0	58.0	63.0	18.0	Pg 48 2" B.S.P.	50
130 1200	M68	61.5	74.0	20.0		50
130 1205	M72 x 2.0	70.0	80.0	18.0		50
130 1210	4" B.S.P.	110.0	130.0	18.0		50

Material: Low Density Polyethylene  
Colour: Natural

\* Part has Flat Head and Different Body Form

If using in non-threaded holes - hole size should be about 0.20 less than listed body diameter 'd'

- Protects tapped or plain holes and prevents the ingress of unwanted debris
- Quick and easy to install
- Domed head gives a neat appearance

RoHS Directive 2002/95/EC compliant





## Pg Threaded Plugs

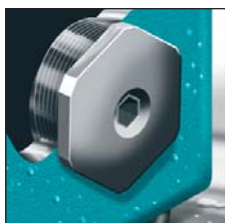
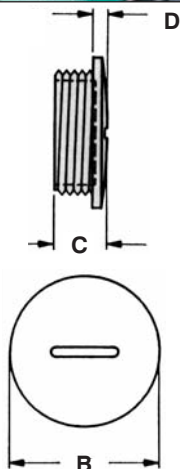
PART NUMBER		Thread Size	Part Dimensions			Unit Quantity
Black	Grey		B Head Diameter	C Overall Height	D Head Height	
445 80000	445 80001	Pg 7	15.0	8.0	2.0	100
445 80002	445 80003	Pg 9	19.0	9.0	3.0	100
445 80004	445 80005	Pg 11	22.0	9.0	3.0	100
445 80006	445 80007	Pg 13.5	25.0	9.5	3.5	100
445 80008	445 80009	Pg 16	27.0	9.5	3.5	100
445 80010	445 80011	Pg 21	33.0	11.0	3.0	100
445 80012	445 80013	Pg 29	44.0	12.0	4.0	50
445 80014	445 80015	Pg 36	55.0	15.0	5.0	25
445 80016	445 80017	Pg 42	62.0	16.0	6.0	25
445 80018	445 80019	Pg 48	69.0	16.0	4.0	25

Material: Glass Filled Nylon  
RoHS Directive 2002/95/EC compliant

Tolerances:  
B, C & D = ± .41



- Plugs conform to N-DIN 46320-FS/PA
- Protection DIN 40050 - IP54
- Excellent resistance to acids, alkalis, sea water, petrol and mineral oil
- Operating temperature -40°C to 100°C



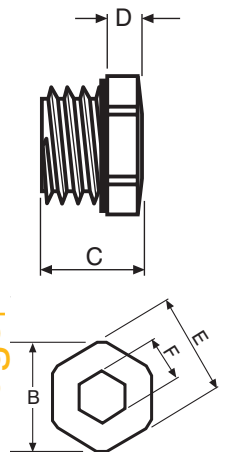
## Hexagon Drive Threaded Plugs

PART NUMBER	Thread Size	Part Dimensions					Unit Quantity
		B Head Diameter	C Overall Height	D Head Height	Across Flats		
					E External Hex	F Internal Hex	
446 1000	Pg 7	16.5	13.0	4.5	15.0	6.0	100
446 1003	Pg 9	20.5	13.0	4.5	19.0	8.0	100
446 1006	Pg 11	25.5	14.5	5.5	24.0	8.0	100
446 1009	Pg 13.5	25.5	14.5	5.5	24.0	8.0	100
446 1012	Pg 16	30.5	16.0	5.5	28.0	8.0	100
446 1015	Pg 21	38.0	17.5	6.0	36.0	8.0	100
446 1018	Pg 29	48.0	18.0	6.5	46.0	8.0	50
446 1021	Pg 36	60.0	20.0	6.5	55.0	8.0	25
446 1024	Pg 42	65.0	20.0	6.5	60.0	8.0	20
446 1027	Pg 48	75.0	21.0	6.5	70.0	8.0	20
446 1200	M12 x 1.5	16.5	13.0	4.5	15.0	6.0	100
446 1203	M16 x 1.5	20.5	13.0	4.5	19.0	8.0	100
446 1206	M20 x 1.5	25.5	14.5	5.5	24.0	8.0	100
446 1209	M25 x 1.5	30.5	16.0	5.5	28.0	8.0	100
446 1212	M32 x 1.5	38.0	18.0	6.5	36.0	8.0	50
446 1215	M40 x 1.5	48.0	18.0	6.5	46.0	8.0	25
446 1218	M50 x 1.5	60.0	20.0	6.5	55.0	8.0	25
446 1225	M63 x 1.5	75.0	21.0	6.5	70.0	8.0	20

Material: Plug - Nylon  
Seal - Buna N  
RoHS Directive 2002/95/EC compliant

Colour: Black  
Protection: IP68  
Operating Temperature: -20°C to 80°C

Tolerances: B, C, D, E & F = ± .30



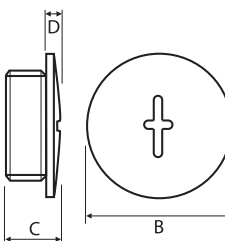
## Metric Threaded Plugs

PART NUMBER		Thread size	C Overall Height	B Head Diameter	D Head Height	Unit Quantity
Grey RAL7035	Black RAL9005					
445 2000	445 2010	M12x1,5	9	17	3	100
445 2001	445 2011	M16x1,5	10	22	4	100
445 2002	445 2012	M20x1,5	10	25	4	100
445 2003	445 2013	M25x1,5	11.5	31	4,5	100
445 2004	445 2014	M32x1,5	13	38	5	100
445 2005	445 2015	M40x1,5	14	48	5	50
445 2006	445 2016	M50x1,5	15	60	5	25
445 2007	445 2017	M63x1,5	18	75	6	25

Material: Nylon 66  
RoHS Directive 2002/95/EC compliant

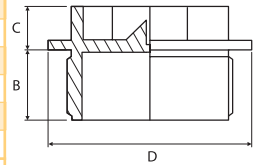


- Ideal for protecting or sealing threaded holes



## Threaded Plugs

PART NUMBER	Thread size METRIC (DIN13/ISO 261)	Hexagon A/F	B	C	D	Unit Quantity
139 4003	M 10x1,5	17.0	8.5	7.5	21.0	250
139 4006	M 12x1,5	17.0	8.5	7.5	20.6	250
139 4008	M 14x1,5	17.0	8.5	7.5	20.6	250
139 4010	M 16x1,5	17.0	8.5	7.5	20.6	250
139 4014	M 18x1,5	17.0	8.5	7.5	20.6	250
139 4018	M 20x1,5	22.0	8.5	7.5	26.5	250
139 4020	M 22x1,5	22.0	8.5	7.5	26.5	250
139 4022	M 24x1,5	22.0	8.5	7.5	26.5	250
139 4024	M 26x1,5	22.0	8.5	7.5	26.5	250
<b>BSP (DIN ISO 228)</b>						
139 5000	1/8x28	12.0	8.5	7.5	16.5	250
139 5001	1/4x19	17.0	8.5	7.5	20.6	250
139 5002	3/8x19	17.0	8.5	7.5	20.6	250
139 5003	1/2x14	22.0	8.5	7.5	26.6	250
139 5004	3/4x14	27.0	8.5	7.5	34.9	250
139 5005	7/8x14		19.4	13.2	36.5	250
139 5006	1 x 11	32.0	8.5	7.5	38.6	100
139 5007	1 1/4x11	36.0	13.8	8.2	53.0	100
139 5008	1 1/2x11	36.0	10.6	8.4	53.4	100
<b>UNF (ANSI B1.1)</b>						
139 6003	UNF 7/16"-20	17.0	8.5	7.5	20.6	250
139 6004	UNF 1/2"-20		18.0	24.0	19.5	250
139 6005	UNF 9/16"-18	17.0	8.5	7.5	20.6	250
139 6006	UNF 5/8"-18	17.0	8.5	7.5	20.6	250
139 6007	UNF 3/4"-16	22.0	8.5	7.5	26.5	250
139 6009	UNF 7/8"-14	22.0	12.0	7.5	26.5	250



Material: High Density Polyethylene  
Colour: Yellow

- Ideal for protecting internal threads in hydraulic and pneumatic equipment during coating processes or transport

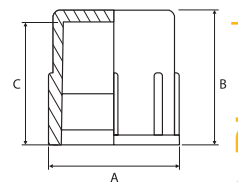
RoHS Directive 2002/95/EC compliant



Also available in Natural Nylon 66 and various sizes, please contact our Sales Department for further information

## Threaded Caps

PART NUMBER	Type METRIC (DIN13/ISO 261)	Material	A	B	C	Unit Quantity
142 5000	M8 x 1.0	HDPE	12.0	10.0	8.0	250
142 5001	M10 x 1.0	HDPE	15.0	12.0	10.0	250
142 5002	M12 x 1.0	HDPE	17.0	12.5	10.5	250
142 5003	M12 x 1,5	HDPE	17.5	12.5	10.5	250
142 5004	M14 x 1,5	LDPE	18.8	11.9	10.4	250
142 5005	M16 x 1,5	LDPE	20.9	13.5	11.9	250
142 5006	M16 x 1,5	LDPE	20.3	25.9	23.9	250
142 5007	M18 x 1,5	LDPE	22.0	12.5	10.8	250
142 5009	M20 x 1,5	LDPE	24.8	15.4	13.9	250
142 5011	M22 x 1,5	LDPE	27.0	14.7	13.9	250
142 5013	M24 x 1,5	HDPE	29.5	13.5	12.0	250
142 5015	M26 x 1,5	HDPE	33.0	14.5	12.5	250
<b>BSP (DIN ISO 228)</b>						
142 6000	1/8"	LDPE	13.0	11.0	10.3	250
142 6001	1/4"	LDPE	16.9	14.3	13.5	250
142 6002	3/8"	LDPE	21.2	13.3	12.0	250
142 6003	1/2"	LDPE	26.8	14.6	13.9	250
142 6004	5/8"	HDPE	29.0	14.0	12.5	250
142 6005	3/4"	LDPE	32.0	15.4	13.8	250
142 6006	7/8"	HDPE	38.0	17.0	15.5	100
142 6007	1"	LDPE	38.3	24.0	22.8	100
142 6009	1 1/4"	HDPE	49.0	25.0	23.5	100
142 6010	1 1/2"	HDPE	55.0	28.0	27.0	100
<b>UNF (ANSI B1.1)</b>						
142 7001	7/16"-20	HDPE	17.0	22.0	20.5	250
142 7002	9/16"-18	LDPE	18.0	13.5	12.9	250
142 7004	5/8"-18	LDPE	19.2	15.0	14.1	250
142 7006	3/4"-16	LDPE	23.9	19.4	17.9	250
142 7008	7/8"-14	LDPE	26.5	15.9	14.7	250



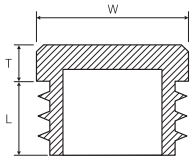
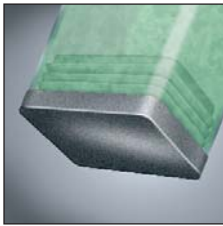
Colour: Yellow

RoHS Directive 2002/95/EC compliant



- Also available in other materials

Other sizes available, please contact our Sales Department for further information



## Rectangular Tube Plugs

PART NUMBER	Tube Size		Part Dimensions			Unit Quantity
	Outside Dimensions	Wall Thickness	L Length	T Head Thickness	W Head Size	
137 2600	12 x 20	1.0 to 1.5	9.8	2.0	12 x 20	500
137 2610	18 x 20	1.0 to 1.5	11.5	4.85	18 x 20	500
137 2620	15 x 30	1.0 to 2.0	12.0	4.85	15 x 30	500
137 2622	20 x 10	1.0 to 2.0	11.5	3.0	20 x 10	500
137 2624	20 x 15	1.0 to 2.0	11.5	4.5	20 x 15	500
137 2630	20 x 30	1.0 to 2.0	11.9	6.13	20 x 30	500
137 2640	20 x 40	1.5 to 2.0	13.6	5.97	20 x 40	500
137 2650	25 x 10	1.0 to 2.0	11.5	4.5	25 x 10	500
137 2652	25 x 15	1.0 to 2.0	11.5	4.5	25 x 15	500
137 2654	25 x 20	1.0 to 2.0	11.5	4.5	25 x 20	500
137 2660	30 x 10	1.0 to 2.0	11.5	4.5	30 x 10	100
137 2662	30 x 20	1.0 to 2.0	11.5	4.5	30 x 20	100
137 2664	30 x 25	1.0 to 2.0	11.5	4.5	30 x 25	100
137 2670	40 x 10	1.0 to 2.0	11.5	4.5	40 x 10	100
137 2672	40 x 15	1.0 to 2.0	11.5	4.5	40 x 15	100
137 2676	40 x 25	1.0 to 2.0	11.5	4.5	40 x 25	100
137 2678	40 x 30	1.0 to 2.0	11.5	4.5	40 x 30	100

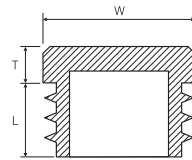
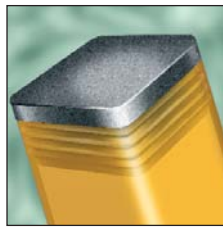
Material: Low Density Polyethylene  
 Colour: Black  
 RoHS Directive 2002/95/EC compliant



- Rugged and durable
- Ideal for plugging rectangular tube ends
- Flexible securing grip ensures a firm fit
- Masks sharp and jagged edges

End use applications may vary.  
 Samples should be application tested before bulk orders are placed

Available in other sizes, please contact our Sales Department for further information



## Square Tube Plugs

PART NUMBER	Tube Size		Part Dimensions			Unit Quantity
	Outside Dimensions	Wall Thickness	L Length	T Head Thickness	W Head Size	
137 2510	10 x 10	1.0 to 2.0	9.8	4.8	10 x 10	500
137 2520	12 x 12	1.0 to 2.0	7.0	1.95	12 x 12	500
137 2525	15 x 15	1.0 to 2.0	11.3	4.0	15 x 15	500
137 2530	18 x 18	1.5 to 2.0	11.8	1.97	18 x 18	500
137 2540	20 x 20	1.5 to 2.0	11.9	5.08	20 x 20	500
137 2550	20 x 20	1.0	11.9	5.08	20 x 20	500
137 2555	22 x 22	1.0 to 2.0	14.0	5.08	20 x 20	500
137 2560	25 x 25	1.5 to 2.0	11.8	6.01	25 x 25	100
137 2570	30 x 30	1.5 to 2.0	11.7	5.84	30 x 30	100
137 2575	35 x 35	1.0 to 2.0	14.5	4.5	35 x 35	100
137 2580	40 x 40	1.5 to 3.0	14.3	4.75	40 x 40	100
137 2585	45 x 45	1.0 to 2.0	14.5	4.5	45 x 45	100
137 2590	50 x 50	1.5 to 4.0	19.3	4.75	50 x 50	100
137 2595	60 x 60	1.0 to 3.0	23.5	4.5	60 x 60	100

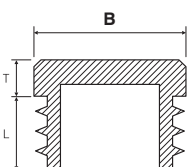
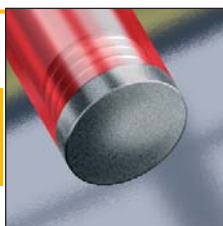
Material: Low Density Polyethylene  
 Colour: Black  
 RoHS Directive 2002/95/EC compliant



- Rugged and durable
- Ideal for plugging square tube ends
- Flexible securing grip ensures a firm fit
- Masks sharp and jagged edges

End use applications may vary.  
 Samples should be application tested before bulk orders are placed

Available in other sizes, please contact our Sales Department for further information



## Round Tube Plugs

PART NUMBER	Tube Size		Part Dimensions			Unit Quantity
	Outside Dimensions	Wall Thickness	L Length	T Head Thickness	B Head Diameter	
137 2720	10.0	1.0 to 2.0	11.5	3.0	10.0	100
137 2730	15.0	0.8 to 2.0	11.5	3.0	15.0	100
137 2740	20.0	1.0 to 2.0	11.5	4.5	20.0	100
137 2750	25.0	1.0 to 2.0	11.5	4.5	25.0	100
137 2760	30.0	1.0 to 2.0	11.5	4.5	30.0	100
137 2770	35.0	1.0 to 2.5	11.5	4.5	35.0	100
137 2780	40.0	1.0 to 3.0	11.8	4.5	40.0	100
137 2790	50.8	1.0 to 2.0	14.0	6.0	50.8	100

Material: Low Density Polyethylene  
 Colour: Black  
 RoHS Directive 2002/95/EC compliant



- Rugged and durable
- Ideal for plugging round tube ends
- Flexible securing grip ensures a firm fit
- Masks sharp and jagged edges

End use applications may vary.  
 Samples should be application tested before bulk orders are placed

Available in other sizes, please contact our Sales Department for further information