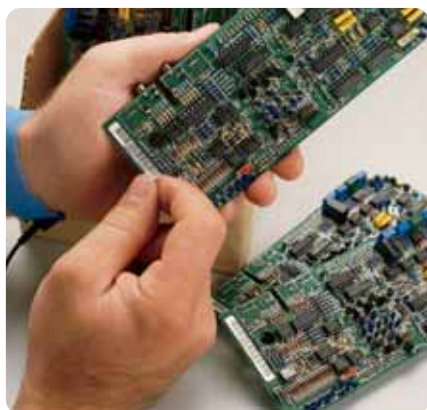


LASER PRINTABLE LABELS

Laser Labels Printable Materials Chart	98
Circuit Board and Component Identification	99 – 101
Wire and Cable Marking	102

Data Communications Equipment and Cabling Labels	103 – 104
General Identification Labels	105 – 106

Laser Printable Material Chart




The high resolution of laser printing makes it possible to generate readable, dense bar codes on labels small enough to fit into limited application space. (B-747 pictured)

Type	Max. Service Temp. °C	Colour	Finish	Use	Special Properties
Nylon Cloth					
B-799	90	White	Matt	Aerospace and military cable marking	Repositionable
Paper					
B-124	66	White/Colours	Matt	110 terminal block marking for telecommunications	Available in green, purple, yellow, blue, red, brown, white, orange and grey
B-759	90	White/Colours	Matt	Bar code and general labelling applications	Excellent toner adhesion
Polyolefin Film					
B-409	90	White	Matt	Bar code labels and general identification	Abrasion resistant
B-410	100	White	Matt	Tamper-evident label	Label destroys upon removal
Polyester					
B-361	110	Clear/White	Matt	Wire and cable marking, self-laminating	Low halogen and sulphur content
B-707	130	White	Matt	Electronic component labelling; general identification	Rough surface application; Stronger bond to low surface energy plastics 
B-709	70	White	Matt	Electronic component, bar code labels and general temporary identification	Removable
B-712	105	Clear	Matt	Electronic component labelling; general identification	Rough surface application; Stronger bond to low surface energy plastics
B-722	105	Clear	Matt	Rating plates, name plates, general-purpose printable overlaminates	Translucent
B-747	130	White/Yellow	Matt	Electronic PCB component, bar code labels and equipment labelling	Excellent solvent and smudge resistance; high-resolution printing; available in white only HF 
B-773	120	Silver	Matt	Rating plates and electronic component marking	Adheres to a variety of surfaces; metallized HF 
Polyimide					
B-652	300 *	Amber	Matt	Bottom PC board and SMT component marking	Withstands extremely high temperatures
Tedlar®					
B-737	130	White	Matt	Aerospace and military cable marking	Repositionable
Polypropylene					
B-425	90	White	Matt	Rating plates and general-purpose labelling	Excellent abrasion and smudge resistance

Tedlar® is a registered trademark of DuPont.

* 5 minutes

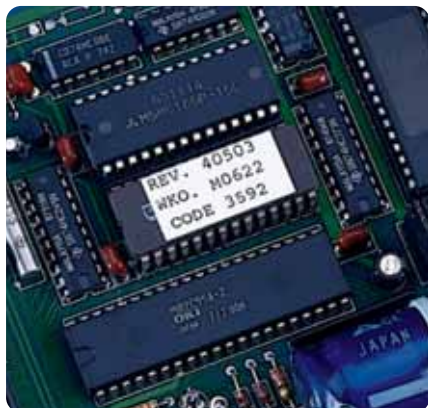
 *These materials are UL recognized.

 *These materials are CSA approved.

HF Halogen free DIN VDE 0472 Part 815

*Refer to the full page charts on pages 280-281 for more information and complete listing of parts.

Circuit Board and Component Identification



Brady label materials are specially engineered to resist the harsh environments associated with the processing of printed circuit boards.

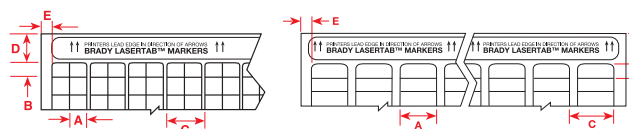
Laser Printable Products Circuit Board Process Chart

	 Through Hole Technology Top Bottom		 Surface Mount Technology (SMT) Top or Bottom	After Process
B-652	● Yes	● Yes	● Yes	● Yes
B-409, B-709, B-747, B-773, B-799	▲ Yes*	✗ No	✗ No	● Yes

* In extreme high temperatures, testing of these materials is recommended.

Polyimides

B-652 High Temperature Amber Polyimide



Order Reference	Pieces per Package	Material	Labels per Row	Label Width A (mm)	Label Height B (mm)	Horizontal Repeat C (mm)	Top Margin D (mm)	Left Margin E (mm)	Labels Per Sheet
LAT-1-652-10	10 000	Polyimide	22	7.62	6.35	17.78	22.23	11.43	836
LAT-2-652-10	10 000	Polyimide	16	9.53	9.53	12.70	22.23	7.95	400
LAT-3-652-10	10 000	Polyimide	10	16.51	6.35	20.32	22.23	8.26	380
LAT-4-652-10	10 000	Polyimide	8	20.32	6.35	25.40	22.23	8.89	304
LAT-5-652-10	10 000	Polyimide	8	20.32	12.70	25.40	22.23	8.89	152
LAT-6-652-10	10 000	Polyimide	7	25.40	6.35	27.94	22.23	11.43	266
LAT-7-652-10	10 000	Polyimide	7	25.40	12.70	27.94	22.23	11.43	133
LAT-8-652-10	10 000	Polyimide	7	25.40	9.53	27.94	22.23	11.43	175
LAT-9-652-10	10 000	Polyimide	5	38.10	6.35	40.64	22.23	7.62	190
LAT-10-652-10	10 000	Polyimide	4	47.63	6.35	50.80	22.23	7.98	156
LAT-12-652-2.5	2 500	Polyimide	2	76.20	9.53	81.28	22.23	29.21	50
LAT-25-652-10	10 000	Polyimide	13	12.70	11.10	15.24	22.23	10.16	286
LAT-26-652-10	10 000	Polyimide	26	6.35	6.35	15.24	22.23	10.16	936
LAT-29-652-10	10 000	Polyimide	10	16.51	5.08	20.32	22.23	8.26	480

LAT = Sheet Size: 215.90 mm x 279.40 mm (US letter)

ELAT = Sheet Size: 210 mm x 297 mm (A4)

